

## 15 Five Forks Road Simpsonville, SC 29681

Ideal Location for Medical or Professional Office

<b>Property Type</b>	Land, Office
<b>Status</b>	Sold
<b>Sale Price</b>	\$175,000
<b>Acreage</b>	+/- 1.019 Acre(s)
<b>Zoning</b>	R-S
<b>County</b>	Greenville
<b>Tax Map</b>	0542010100607



### AGENT CONTACT



BRAD DOYLE

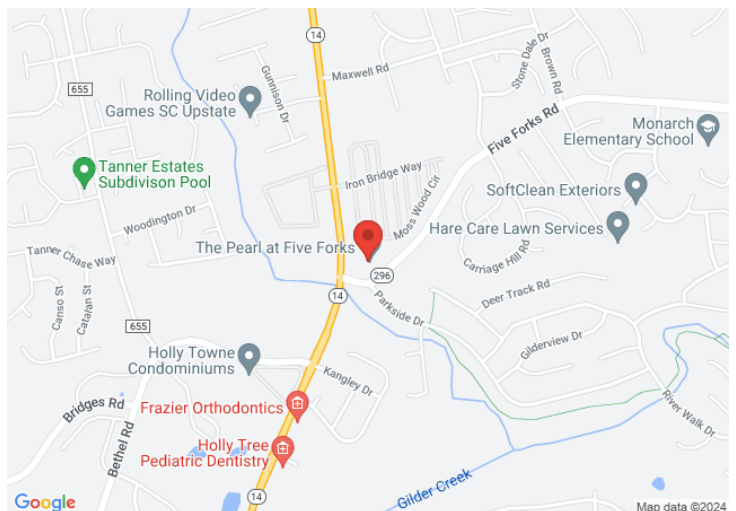
[brad@kdsproperties.com](mailto:brad@kdsproperties.com)

O: 864-242-4200

M: 864-237-8458

### PROPERTY FEATURES

- Simpsonville Market – Established & Growing Residential Market
- Ideal Location for Office (medical, professional)
- Approx 200' Frontage on Five Forks Road
- Across from newly built Five Forks Memory Care
- Strong Residential Demographics
- Direct Access on Five Forks Road
- All Utilities Available to Site
- Currently R-S Zoned | PD Zoning across the Street

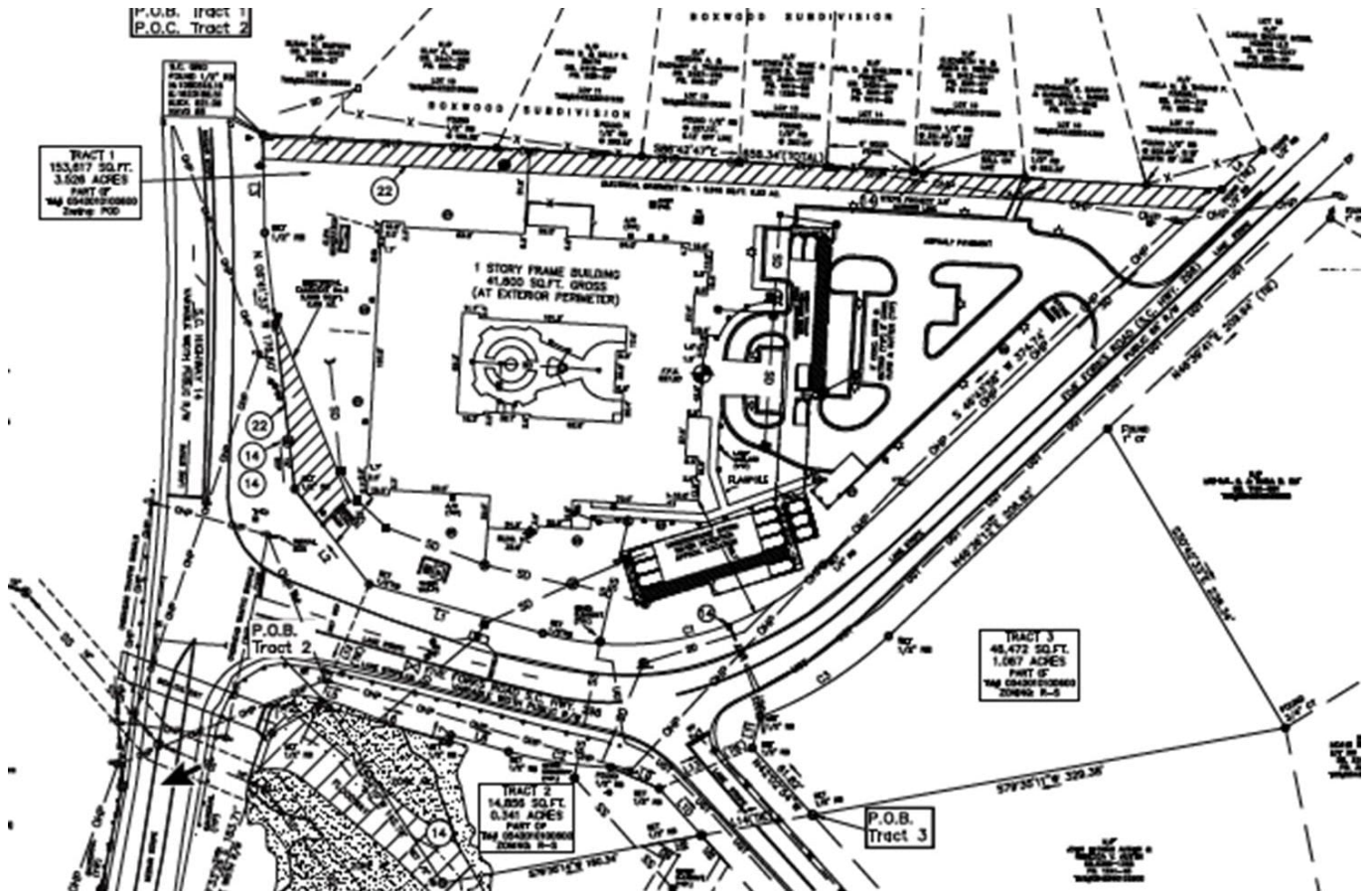


*All information contained herein has been obtained from sources deemed reliable, but we cannot guarantee it. It is also subject to change without notice.*

340 Rocky Slope Road, Suite 302, Greenville, SC 29607

📞 864-242-4200 • [kdsproperties.com](http://kdsproperties.com) • ✉ [admin@kdsproperties.com](mailto:admin@kdsproperties.com)

## SITE PLAN



*All information contained herein has been obtained from sources deemed reliable, but we cannot guarantee it. It is also subject to change without notice.*

340 Rocky Slope Road, Suite 302, Greenville, SC 29607

☎ 864-242-4200 • [kdsproperties.com](http://kdsproperties.com) • ✉ [admin@kdsproperties.com](mailto:admin@kdsproperties.com)





*All information contained herein has been obtained from sources deemed reliable,  
but we cannot guarantee it. It is also subject to change without notice.*

340 Rocky Slope Road, Suite 302, Greenville, SC 29607

☎ 864-242-4200 • [kdsproperties.com](http://kdsproperties.com) • ✉ [admin@kdsproperties.com](mailto:admin@kdsproperties.com)