

28 Oeland Drive Greenville, SC 29609

Property Type	Industrial, Office
Status	Sold
Sale Price	\$699,900
Square Feet	+/- 17,430 Square Feet
Zoning	S-1
County	Greenville
Tax Map	0183020504400



AGENT CONTACT



BRAD DOYLE

brad@kdsproperties.com

O: 864-242-4200

M: 864-237-8458



GARY KIRBY

gary@kdsproperties.com

O: 864-242-4200

M: 864-650-5556



PROPERTY FEATURES

- 17,430 SF light industrial building
- Approximately 1,000 SF of office space
- Open floor plan with exposed brick & natural light
- Wet sprinkler system throughout building
- Immediately accessible to intersection of N. Main St & Rutherford Road
- 1 dock level door & 1 grade level door



All information contained herein has been obtained from sources deemed reliable, but we cannot guarantee it. It is also subject to change without notice.

340 Rocky Slope Road, Suite 302, Greenville, SC 29607

📞 864-242-4200 • kdsproperties.com • ✉ admin@kdsproperties.com



*All information contained herein has been obtained from sources deemed reliable,
but we cannot guarantee it. It is also subject to change without notice.*

340 Rocky Slope Road, Suite 302, Greenville, SC 29607

☎ 864-242-4200 • kdsproperties.com • ✉ admin@kdsproperties.com

PHOTOS

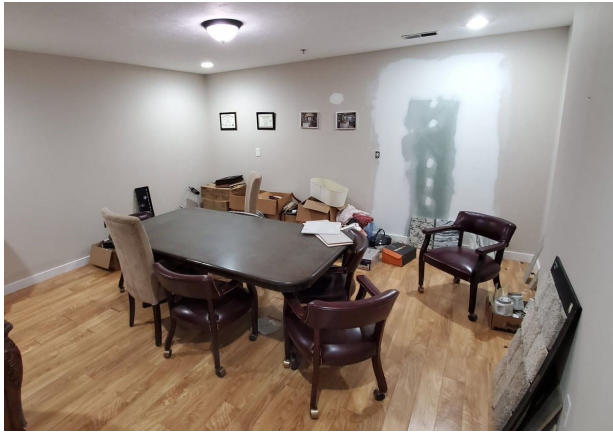


*All information contained herein has been obtained from sources deemed reliable,
but we cannot guarantee it. It is also subject to change without notice.*

340 Rocky Slope Road, Suite 302, Greenville, SC 29607

☎ 864-242-4200 • kdsproperties.com • ✉ admin@kdsproperties.com

PHOTOS



*All information contained herein has been obtained from sources deemed reliable,
but we cannot guarantee it. It is also subject to change without notice.*

340 Rocky Slope Road, Suite 302, Greenville, SC 29607

☎ 864-242-4200 • kdsproperties.com • ✉ admin@kdsproperties.com