

324 S Main Street Belton, SC 29627

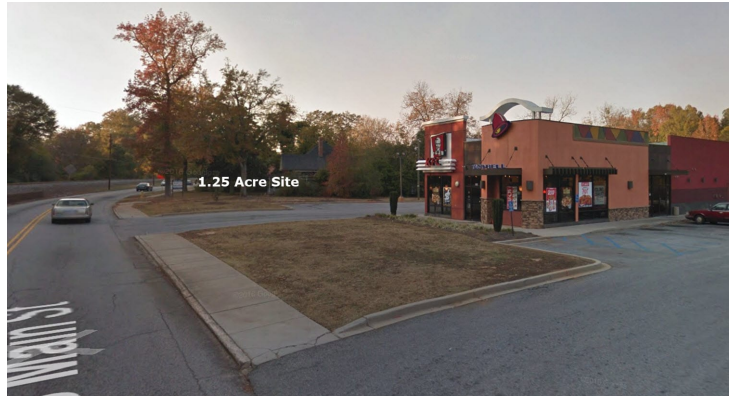
Main Street Location in Newer Retail Corridor

Property Type	Land, Retail
Status	Sold
Property ID	5310
Sale Price	\$225,000
Acreage	+/- 1.25 Acre(s)
Zoning	General Commercial
County	Anderson
Tax Map	250-01-01-006

AGENT CONTACT

PROPERTY FEATURES

- Adjacent to KFC/Taco Bell and within Corridor of Newer Retail
- Great Traffic Visibility
- 150' FF, Rectangular Shaped and Flat (gently sloping towards back)
- Utilities to Site
- Commercial Zoning - Flexible Uses (see additional file below- general commerical uses)



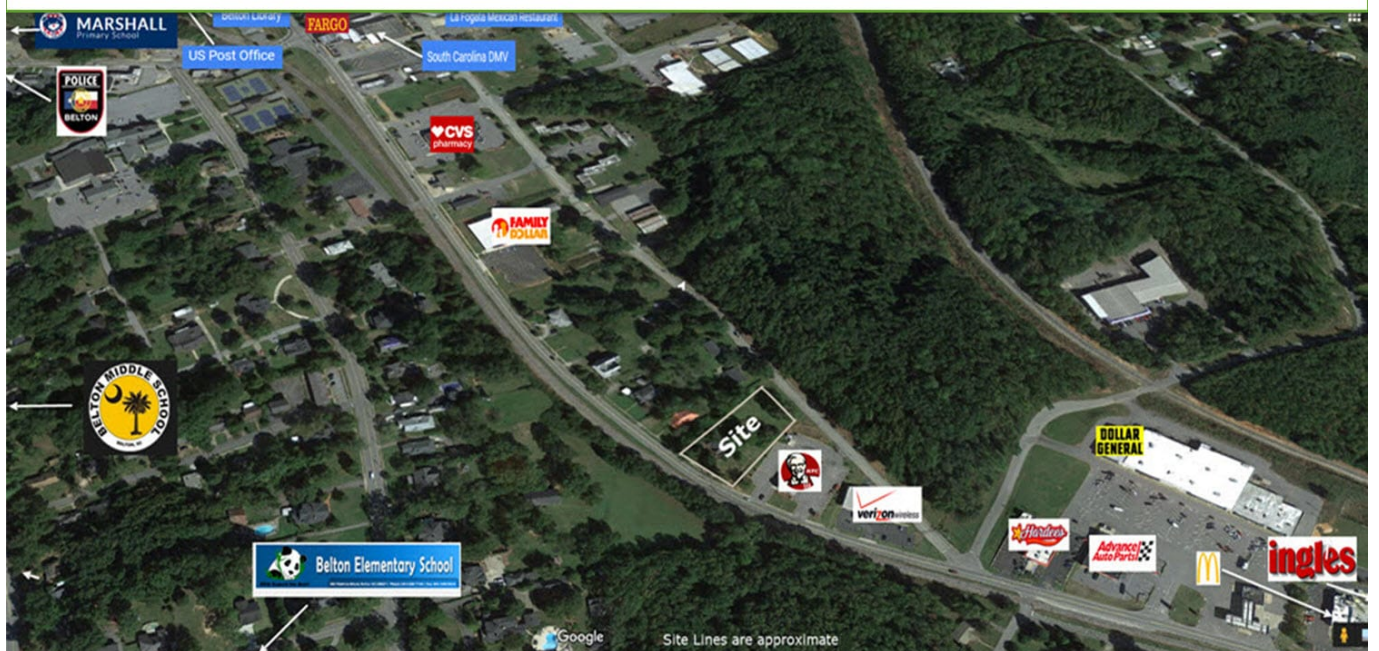
All information contained herein has been obtained from sources deemed reliable, but we cannot guarantee it. It is also subject to change without notice.

340 Rocky Slope Road, Suite 302, Greenville, SC 29607

📞 864-242-4200 • kdsproperties.com • ✉ admin@kdsproperties.com



Located within Corridor of Newer Retail



All information contained herein has been obtained from sources deemed reliable, but we cannot guarantee it. It is also subject to change without notice.

340 Rocky Slope Road, Suite 302, Greenville, SC 29607

📞 864-242-4200 • kdsproperties.com • ✉ admin@kdsproperties.com