

7 Henderson Road Greenville, SC 29607

Excellent Location off Laurens Road |
Suitable for Creative Space or Professional
Office

Property Type	Office
Status	Sold
Sale Price	\$275,000
Acreage	+/- 0.202 Acre(s)
Zoning	R-M2
County	Greenville
Tax Map	0263000105000

AGENT CONTACT



BRAD DOYLE

brad@kdsproperties.com

[O: 864-242-4200](tel:864-242-4200)

[M: 864-237-8458](tel:864-237-8458)



MARK MASASCHI, CCIM

mark@kdsproperties.com

[O: 864-242-4200](tel:864-242-4200)

[M: 864-380-2614](tel:864-380-2614)

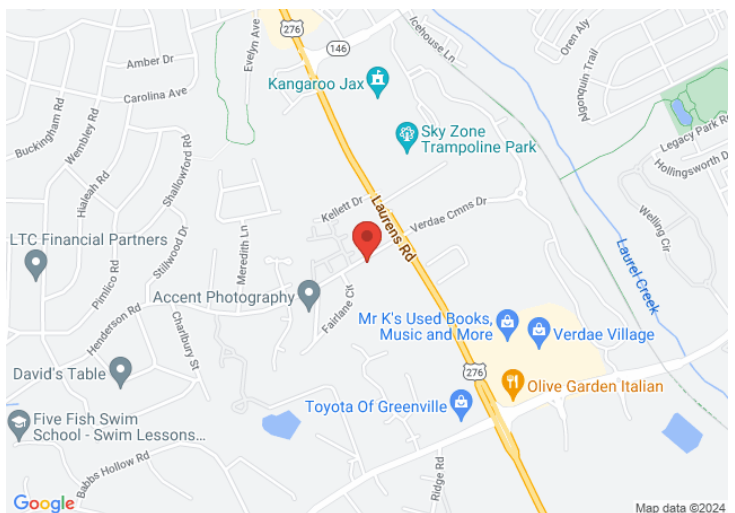
PROPERTY FEATURES

- Free-Standing Office - 1,180 SF
- Converted from residential by High-End Residential Architect with High-Quality Finishes Throughout
- Well-Suited for Various Professional Office Uses
- Also, potential for Creative-Type Space
- Good Visibility to high-traveled Henderson Road, a main entry to Gower Estates
- Excellent Location on the edge of Gower Estates, less than a mile to major thoroughfares: Haywood Road, Woodruff Road, Verdae Blvd, Laurens Road and I-85
- R-M2 Zoning Classification in the City of Greenville, neighbored by C-3 & R-6

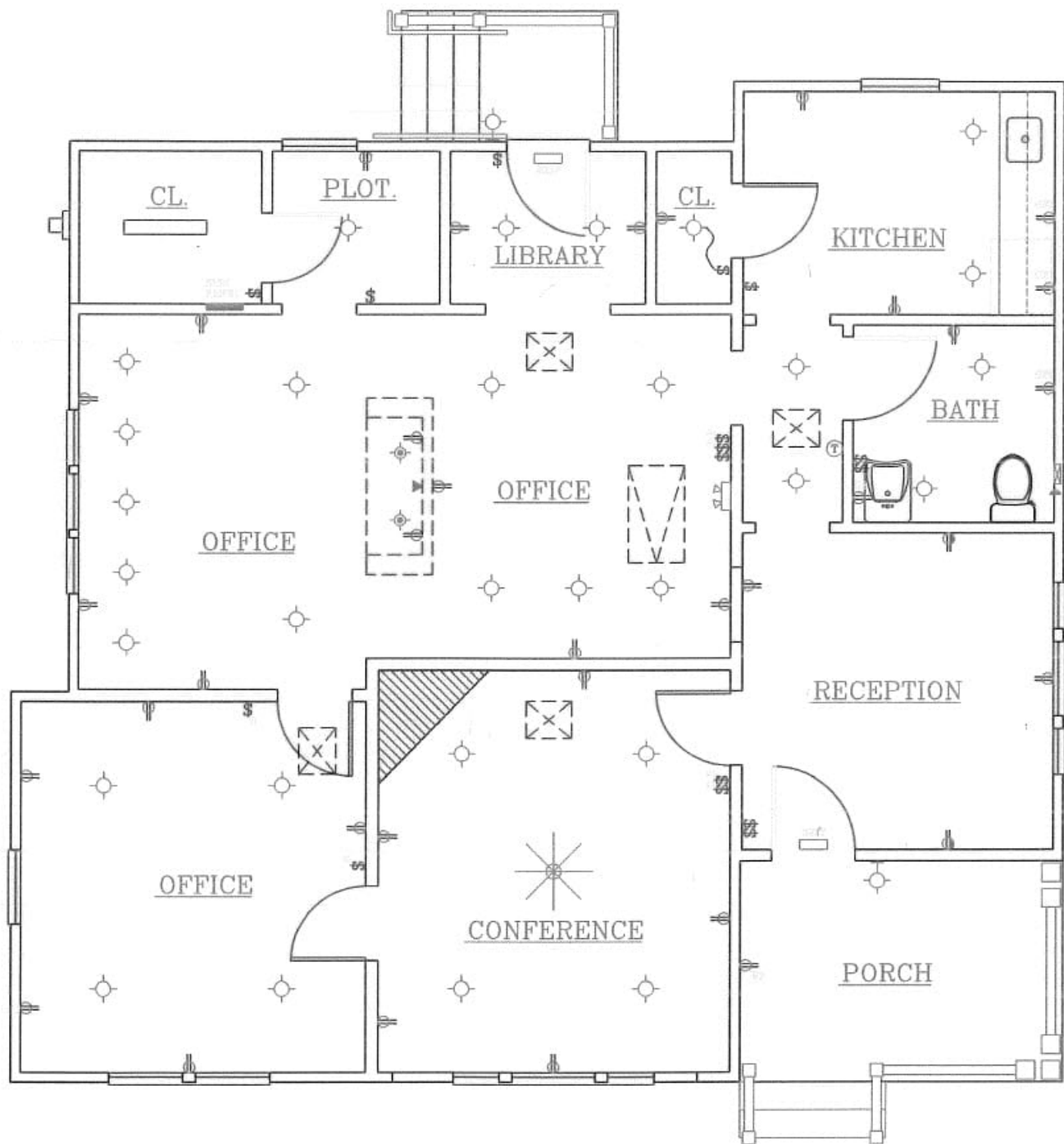
*All information contained herein has been obtained from sources deemed reliable,
but we cannot guarantee it. It is also subject to change without notice.*

340 Rocky Slope Road, Suite 302, Greenville, SC 29607

📞 864-242-4200 • kdsproperties.com • ✉ admin@kdsproperties.com



FLOOR PLAN



*All information contained herein has been obtained from sources deemed reliable,
but we cannot guarantee it. It is also subject to change without notice.*

340 Rocky Slope Road, Suite 302, Greenville, SC 29607

☎ 864-242-4200 • kdsproperties.com • ✉ admin@kdsproperties.com

AERIAL VIEW



*All information contained herein has been obtained from sources deemed reliable,
but we cannot guarantee it. It is also subject to change without notice.*

340 Rocky Slope Road, Suite 302, Greenville, SC 29607

☎ 864-242-4200 • kdsproperties.com • ✉ admin@kdsproperties.com



Custom Finishes

- ❖ Custom made mahogany porch newels, handrail and pickets
- ❖ Tongue and groove lpe front porch flooring
- ❖ Custom made mahogany shutters with premium hardware
- ❖ 1x6 lpe back porch decking
- ❖ Premium grade aluminum clad Anderson 'E' series windows
- ❖ Craftsman style fir front door
- ❖ Half round seamless aluminum gutters with solid aluminum hangers
- ❖ Hardi plank and cedar shake exterior (Painted and stained in 2017)
- ❖ Architectural style Tamko shingles
- ❖ Trane mechanical system with metal ductwork (supply and returns in nearly every room)
- ❖ 200 Amp electrical service with buried main feed
- ❖ Kitchenette with custom cabinets, granite countertop, sink and disposal
- ❖ 2-panel solid wood interior doors
- ❖ Emtek architectural door hardware
- ❖ Custom interior moldings: Crown, base and door casings

All information contained herein has been obtained from sources deemed reliable, but we cannot guarantee it. It is also subject to change without notice.

340 Rocky Slope Road, Suite 302, Greenville, SC 29607

☎ 864-242-4200 • kdsproperties.com • ✉ admin@kdsproperties.com