

## 702 North A Street Easley, SC 29640

Single Tenant Medical Office Investment Opportunity

|                      |                       |
|----------------------|-----------------------|
| <b>Property Type</b> | Medical, Office       |
| <b>Status</b>        | Sold                  |
| <b>Sale Price</b>    | \$624,500             |
| <b>Square Feet</b>   | +/- 3,680 Square Feet |
| <b>County</b>        | Pickens               |
| <b>Tax Map</b>       | 501912868247          |



### AGENT CONTACT



LARRY WEBB

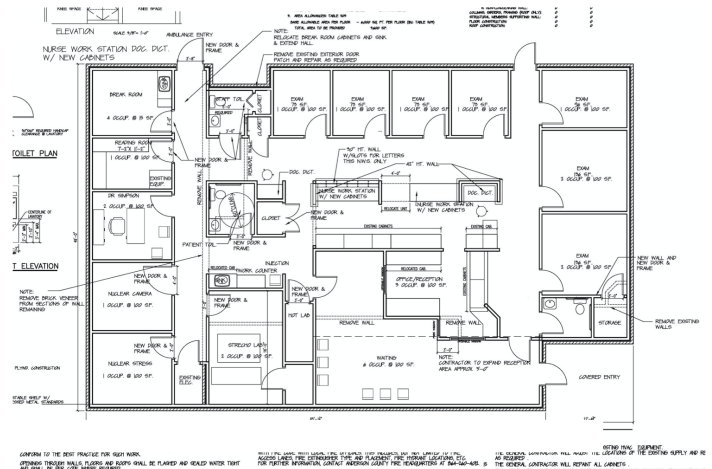
[larry@kdsproperties.com](mailto:larry@kdsproperties.com)

O: 864-242-4200

M: 864-238-6673

### PROPERTY FEATURES

- +/- 3,680 SF Single Tenant Medical Office Facility
- Located Downtown Easley, South Carolina Adjacent to the Baptist Medical Center Easley Campus
- Extensive Renovations to Facility. Including New Roof, Parking Lot, and Interior Enhancements
- Currently Home to a well Established Cardiology Group



*All information contained herein has been obtained from sources deemed reliable, but we cannot guarantee it. It is also subject to change without notice.*

340 Rocky Slope Road, Suite 302, Greenville, SC 29607

📞 864-242-4200 • [kdsproperties.com](http://kdsproperties.com) • ✉ [admin@kdsproperties.com](mailto:admin@kdsproperties.com)



*All information contained herein has been obtained from sources deemed reliable,  
but we cannot guarantee it. It is also subject to change without notice.*

**340 Rocky Slope Road, Suite 302, Greenville, SC 29607**

**☎ 864-242-4200 • [kdsproperties.com](https://kdsproperties.com) • ✉ [admin@kdsproperties.com](mailto:admin@kdsproperties.com)**