

BROKERAGE • DEVELOPMENT • INVESTMENTS

10 Toy Street, Suite 201 Greenville, SC 29601

Class A Office Suite in Historic Hayne School Building in Pettigru District, Downtown Greenville

Property Type	Office
Status	Leased
Lease Rate	\$24.00 PSF, Full Service
Square Feet	+/- 2,932 Square Feet
County	Greenville



AGENT CONTACT



BRAD DOYLE

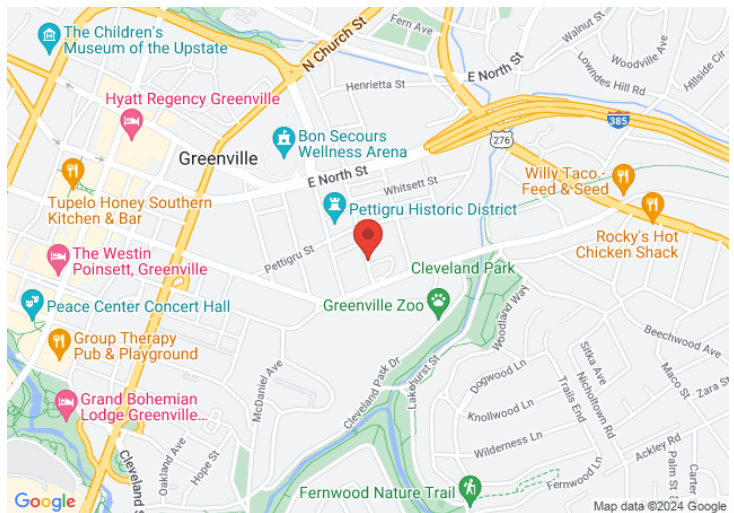
brad@kdsproperties.com

O: 864-242-4200

M: 864-237-8458

PROPERTY FEATURES

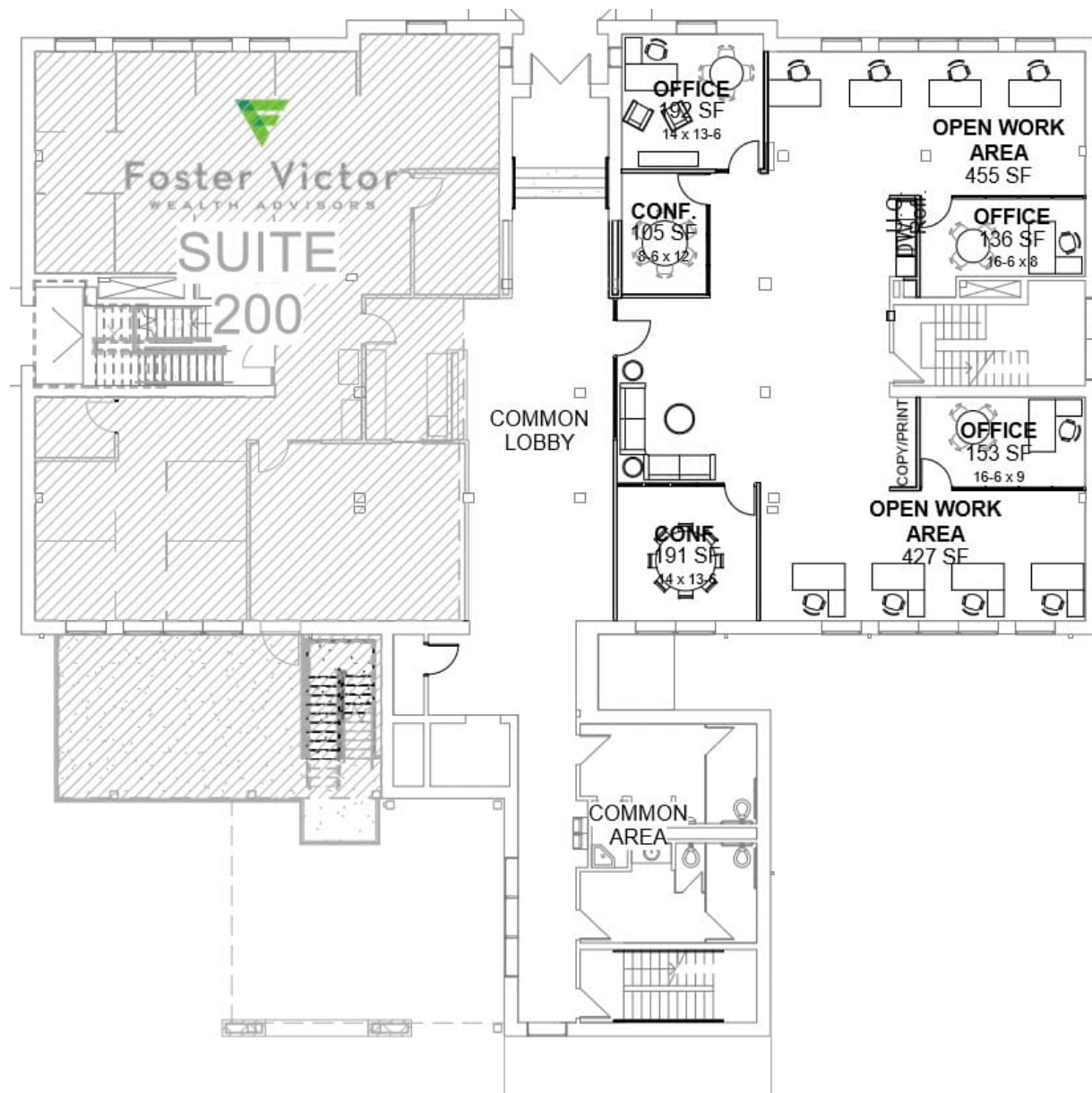
- Hayne School Building Built in 1920
- Predominantly Open Floor Plan with three Private Offices and two Conference Rooms
- Shared Common Lobby with Foster Victor Wealth Advisors
- Ideal Space for Professional Office User
- Space Delivered July 2020
- Ample On-Site Parking Included in Rate
- Suite 201 can be Combined with Available Suite 100. Allowing up to 6,424 SF of Office Space



All information contained herein has been obtained from sources deemed reliable, but we cannot guarantee it. It is also subject to change without notice.

340 Rocky Slope Road, Suite 302, Greenville, SC 29607

📞 864-242-4200 • kdsproperties.com • ✉ admin@kdsproperties.com

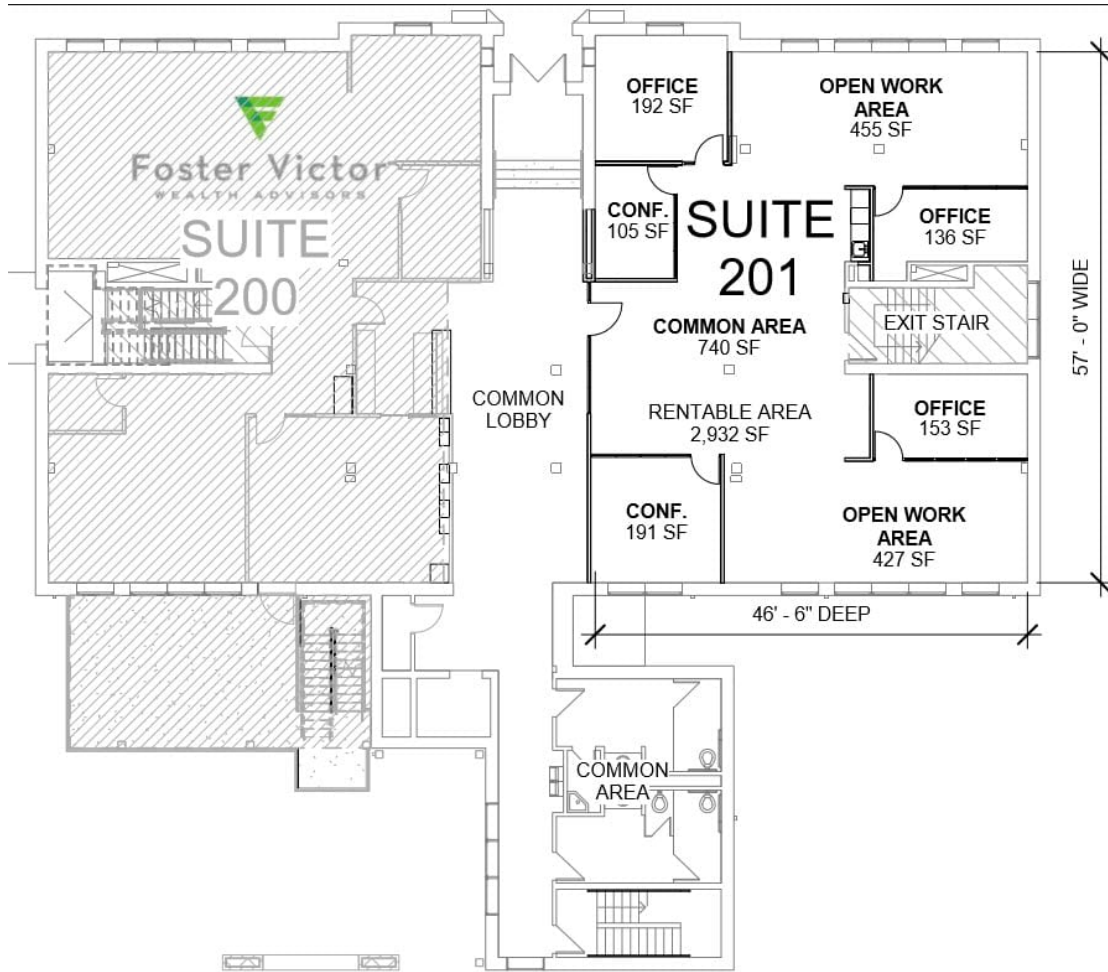


2 SUITE 201 - LAYOUT
LOD-2 1/16" = 1'-0"

All information contained herein has been obtained from sources deemed reliable, but we cannot guarantee it. It is also subject to change without notice.

340 Rocky Slope Road, Suite 302, Greenville, SC 29607

☎ 864-242-4200 • kdsproperties.com • ✉ admin@kdsproperties.com



2
LOD-1

SUITE 201 - RENTABLE AREA

1/16" = 1'-0"

*All information contained herein has been obtained from sources deemed reliable,
but we cannot guarantee it. It is also subject to change without notice.*

340 Rocky Slope Road, Suite 302, Greenville, SC 29607

☎ 864-242-4200 • kdsproperties.com • ✉ admin@kdsproperties.com