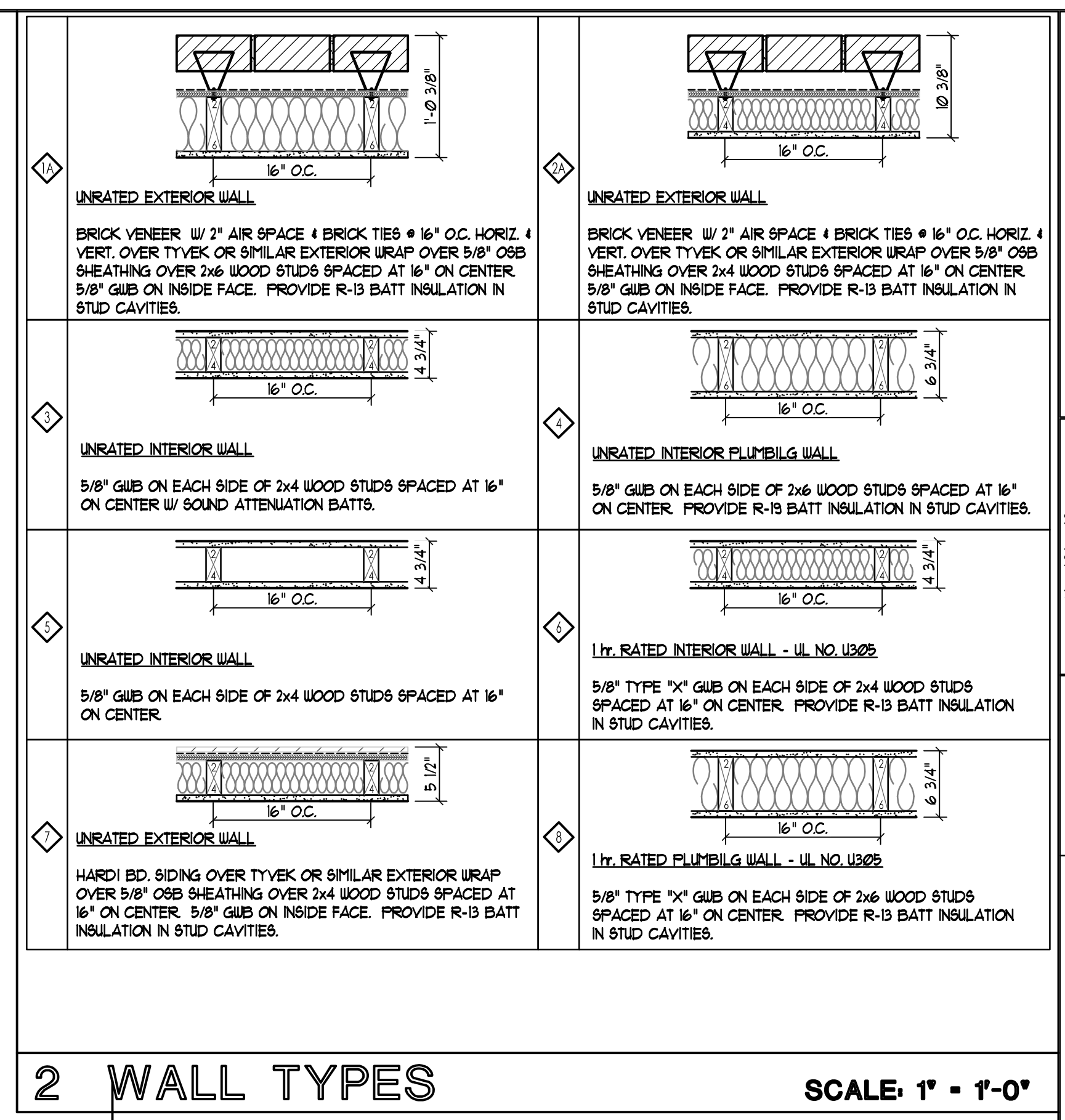
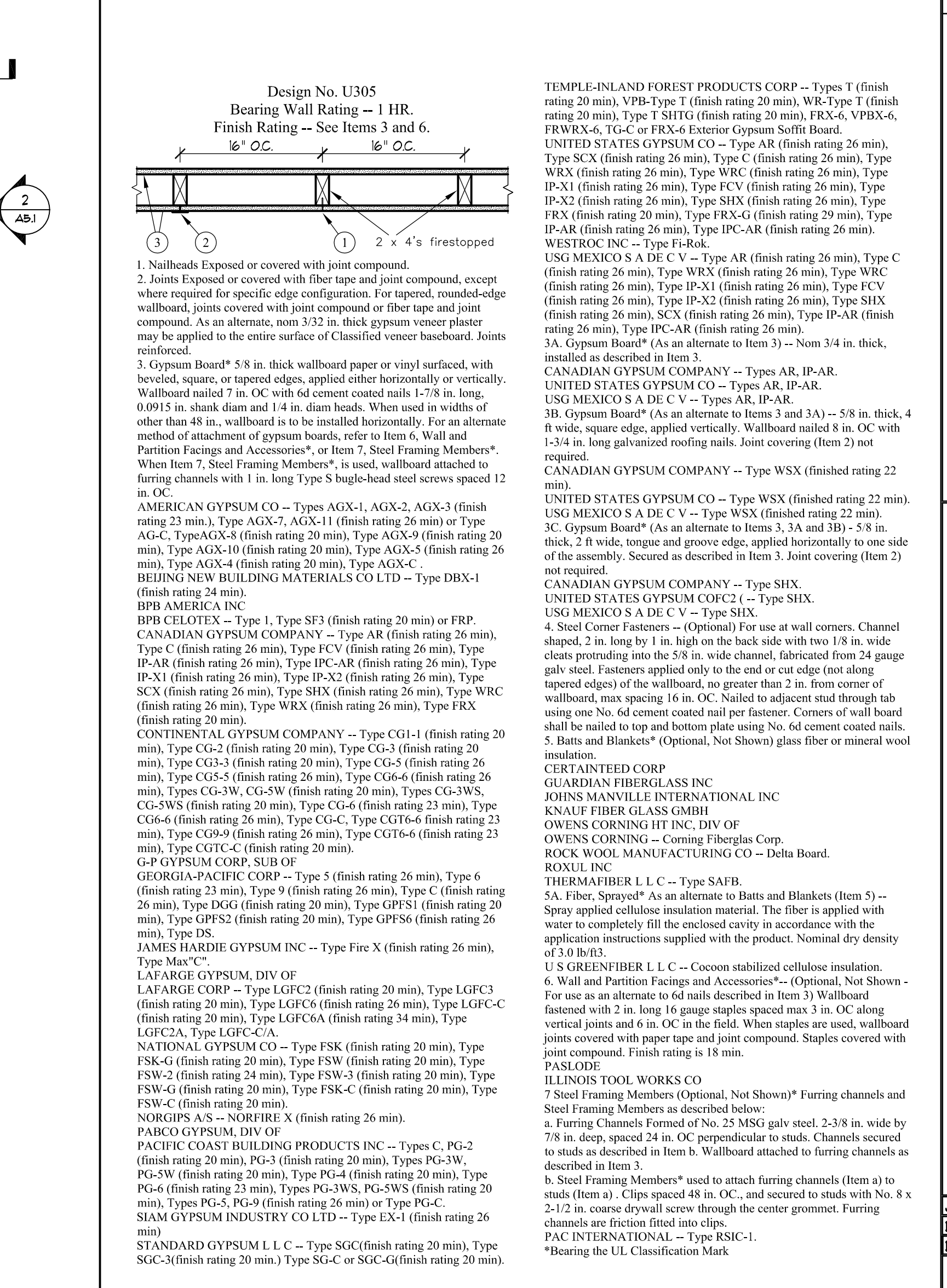


1 MAIN FLOOR PLAN



2 WALL TYPES



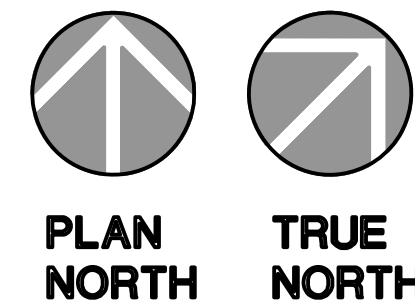
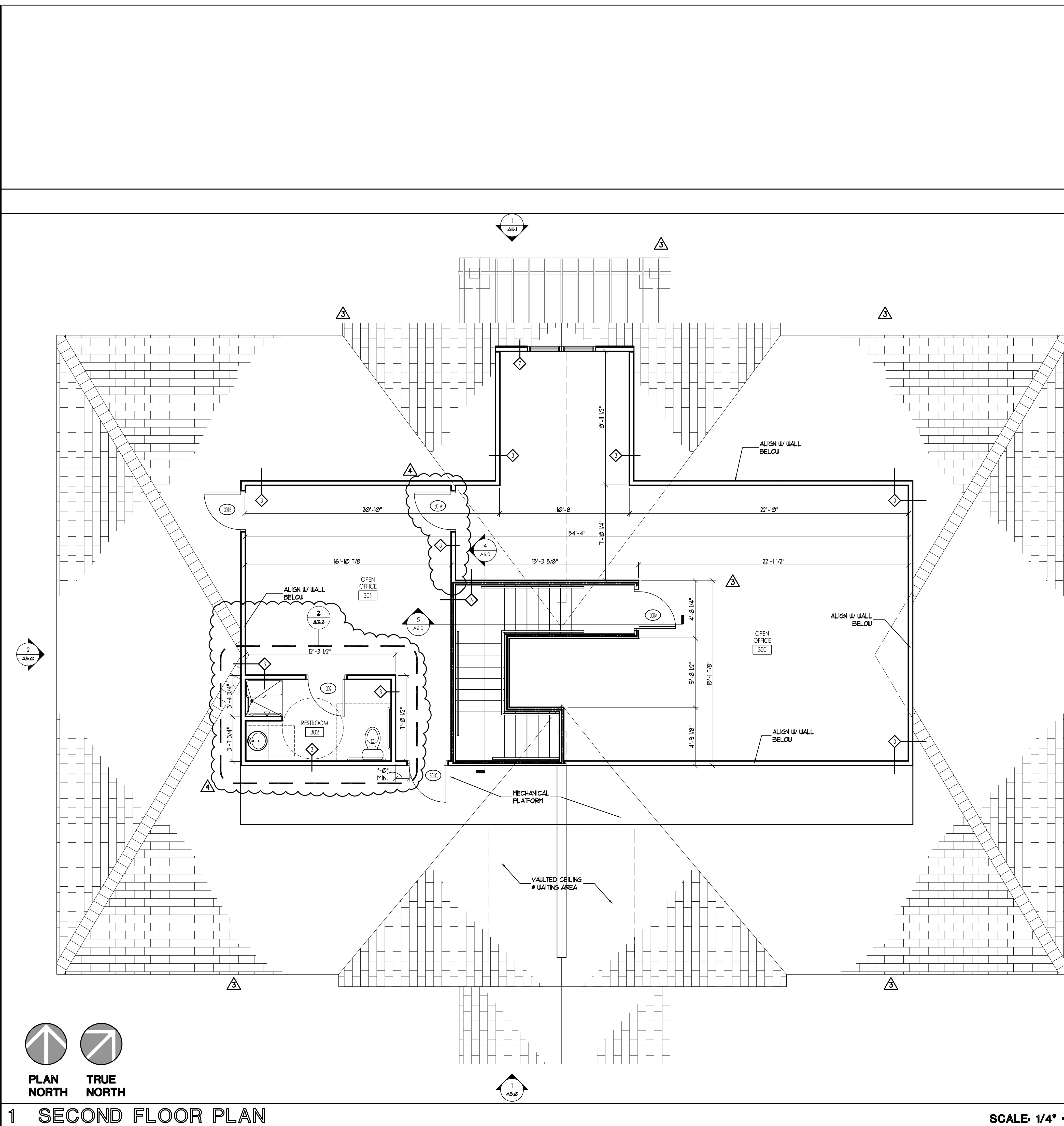
3 UL DETAIL 305

LANGLEY & ASSOCIATES ARCHITECTS, LLC
 109 SOUTH MAIN STREET
 GREER, SOUTH CAROLINA 29660
 PHONE: (864) 968 - 0224
 FAX: (864) 968 - 9550
 www.la-architects.com

UPFIT FOR CCAD OFFICE @ ROPER 800 SUITES
 803 ROPER CREEK DR. - GREENVILLE, SC
MAIN LEVEL FLOOR PLAN

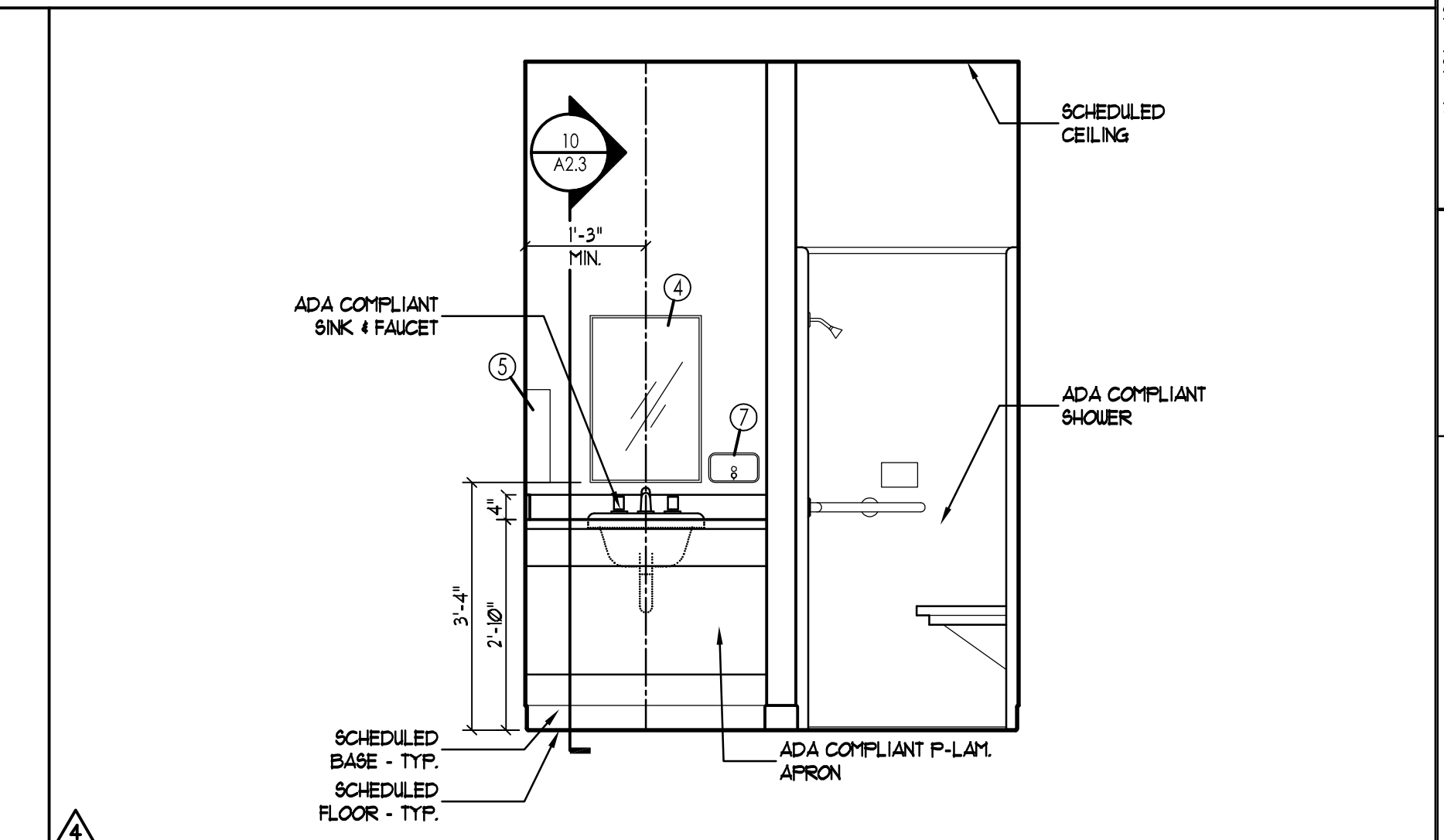
JOB NO: 2007-298
 DATE: 08.16.08
 DESC: ISSUE FOR UPFIT PERMIT

COPYRIGHT 2008 Langley & Associates Architects, LLC or its consultants. These drawings are the property of the Architect and may not be reproduced in whole or in part without the written consent of the Architect. All bids are assumed to be submitted from the review of a complete set of drawings. Bids submitted from partial sets are at the contractor's risk.

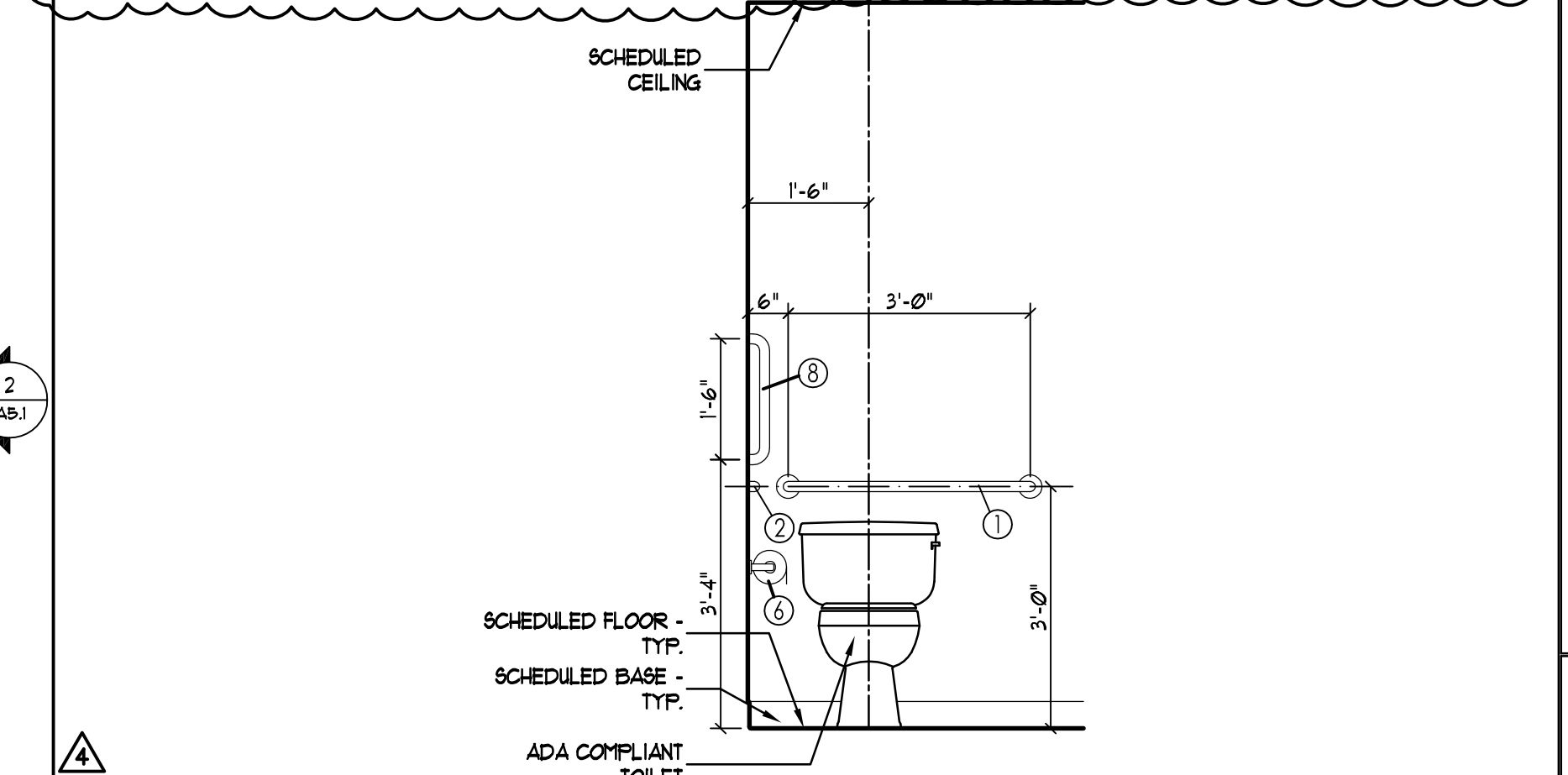


1 SECOND FLOOR PLAN

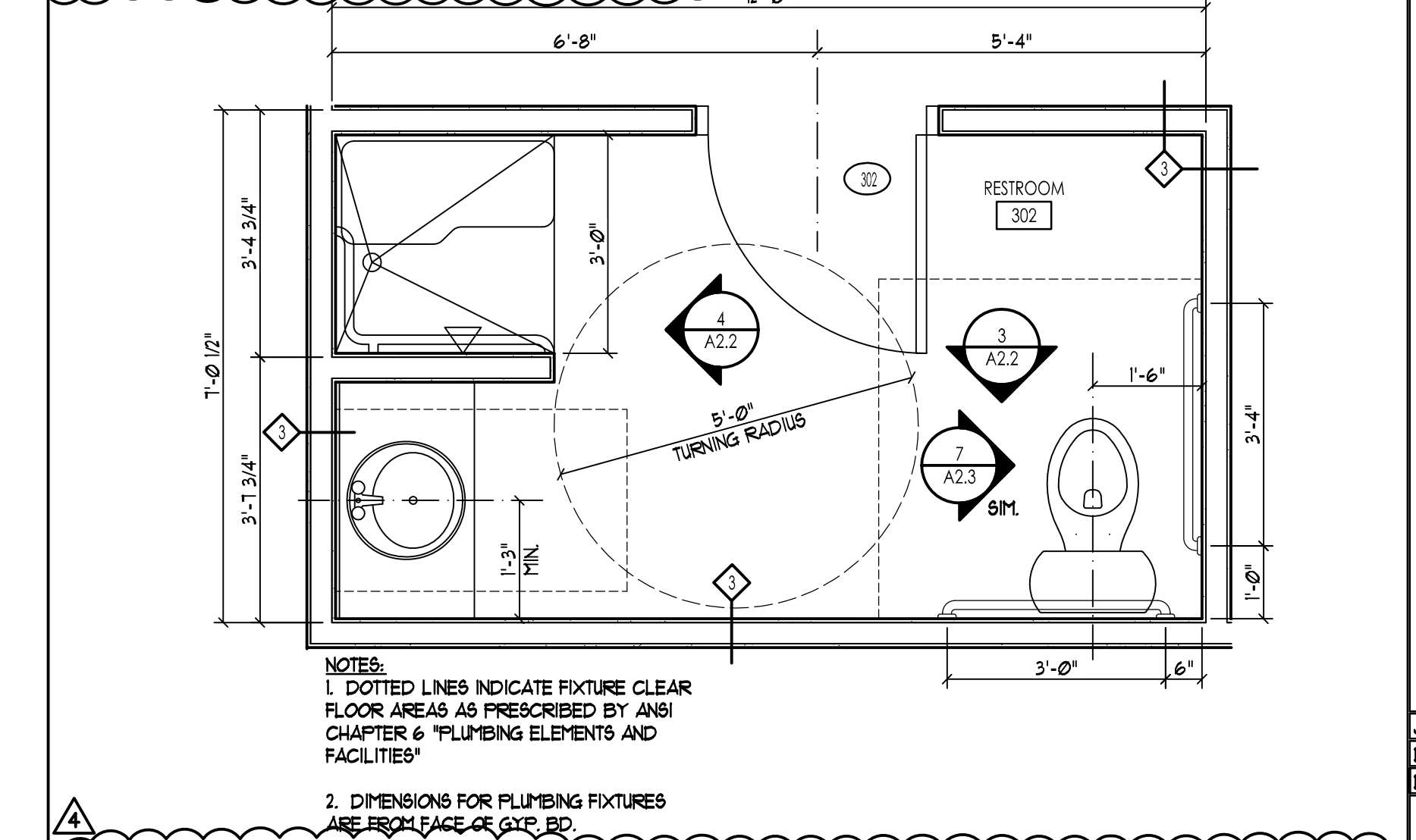
SCALE: 1/4" = 1'-0"



4 RESTROOM ELEV. SCALE: 1/2" = 1'-0"



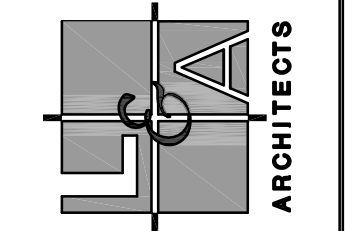
3 TOILET ELEVATION SCALE: 1/2" = 1'-0"



2 RESTROOM PLAN SCALE: 1/2" = 1'-0"

NOTES:
 1. DOTTED LINES INDICATE FIXTURE CLEAR FLOOR AREAS AS PRESCRIBED BY ANSI CHAPTER 6 "PLUMBING ELEMENTS AND FACILITIES"
 2. DIMENSIONS FOR PLUMBING FIXTURES ARE FROM FACE OF GIP, B.D.

NO.	DATE	DESCRIPTION
1	08-16-08	OWNER CHANGES
2	11-11-08	OWNER CHANGES / CODE COMMENTS



108 SOUTH MAIN STREET
 GREER, SOUTH CAROLINA 29650
 PHONE: (864) 968 - 0224
 FAX: (864) 968 - 9550
 www.la-architects.com

LANGLEY & ASSOCIATES
 ARCHITECTS, LLC

UPFIT FOR CCAD OFFICE
 ROPER 800 SUITES
 803 ROPER CREEK DR. - GREENVILLE, SC
SECOND FLOOR PLAN

JOB NO: 2007-298
 DATE: 08.16.08
 DESC: ISSUE FOR UPFIT PERMIT

A2.2

COPYRIGHT 2008 Langley & Associates Architects, LLC or their consultants. These drawings are the property of the Architect and may not be reproduced in whole or in part without the written consent of the Architect. All bids are assumed to be submitted from the review of a complete set of drawings. Bids submitted from partial sets are at the contractor's risk.