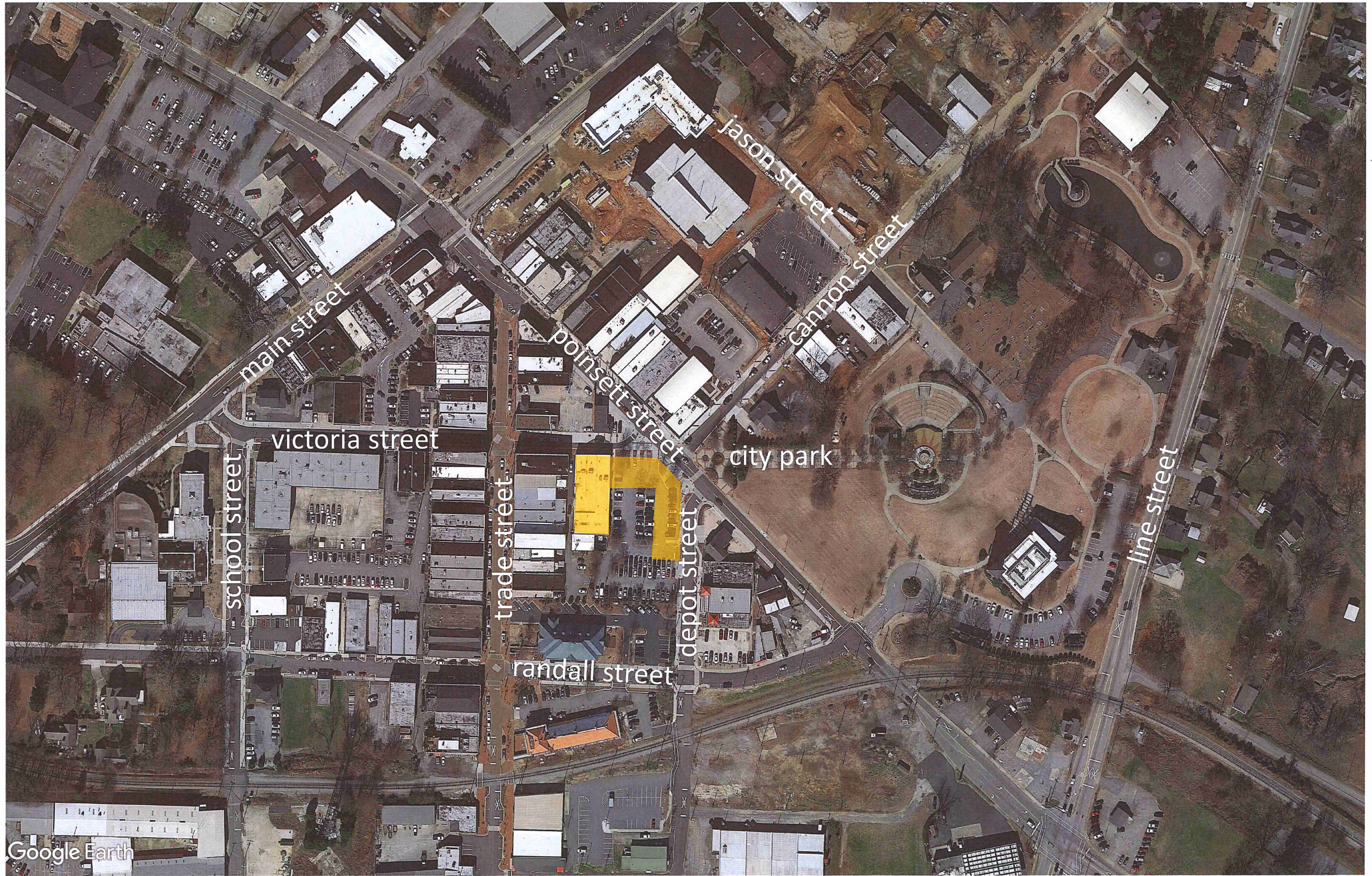
An aerial photograph of Greer, South Carolina, taken during the golden hour of sunset. The sky is filled with soft, orange and pink clouds. The town below is a mix of brick buildings, parking lots, and green spaces. A prominent white water tower is visible on the right side of the town. In the foreground, there's a large green field. The overall scene is peaceful and scenic.

Greer
City of Greer, SC



main street

victoria street

school street

trade street

randall street

depot street

poinsett street

city park

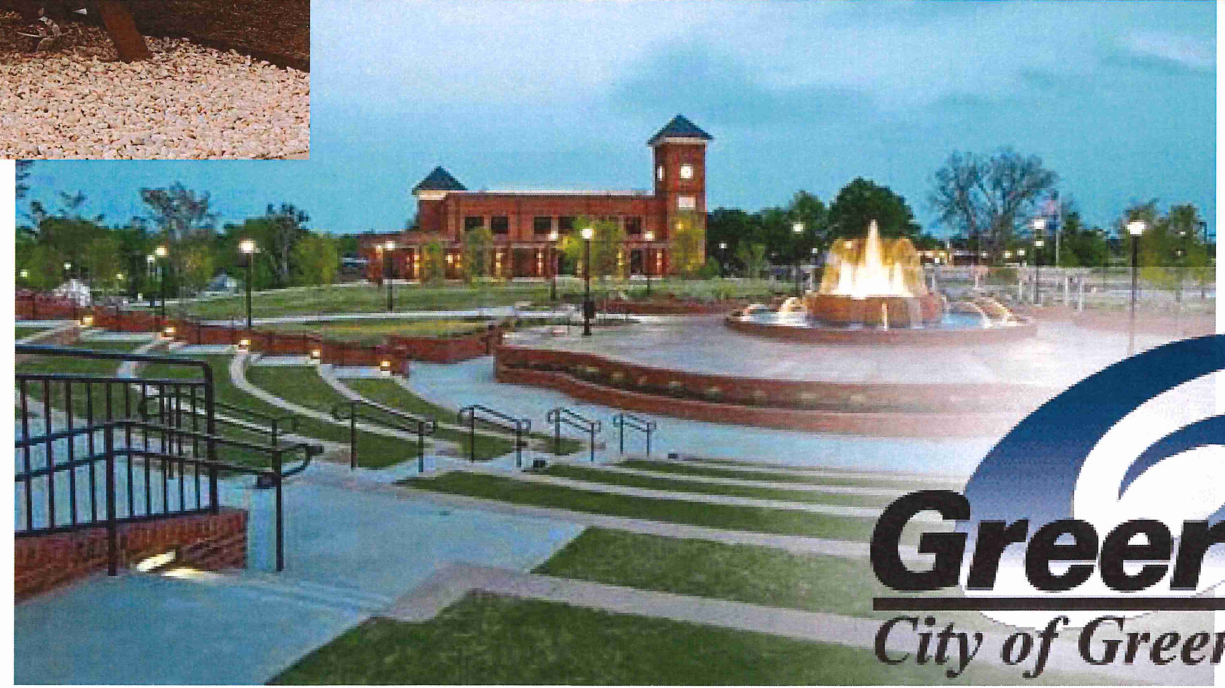
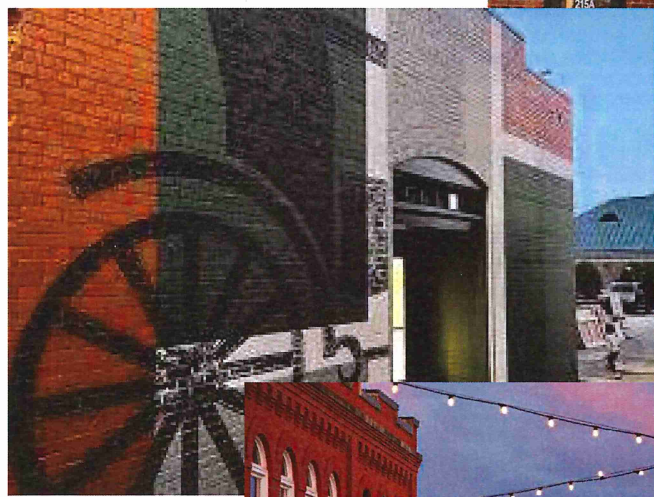
jason street

cannon street

line street

GREER STATION

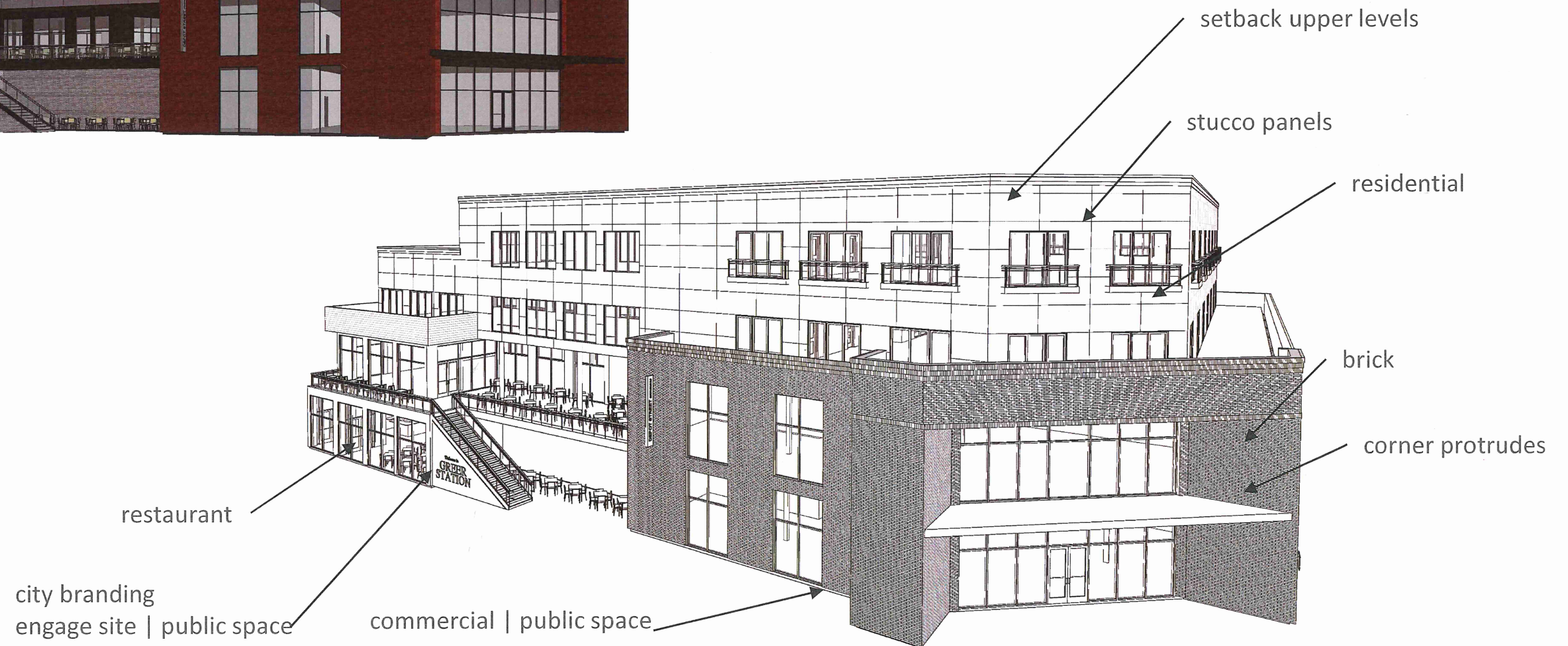
context | dining | seating | public space



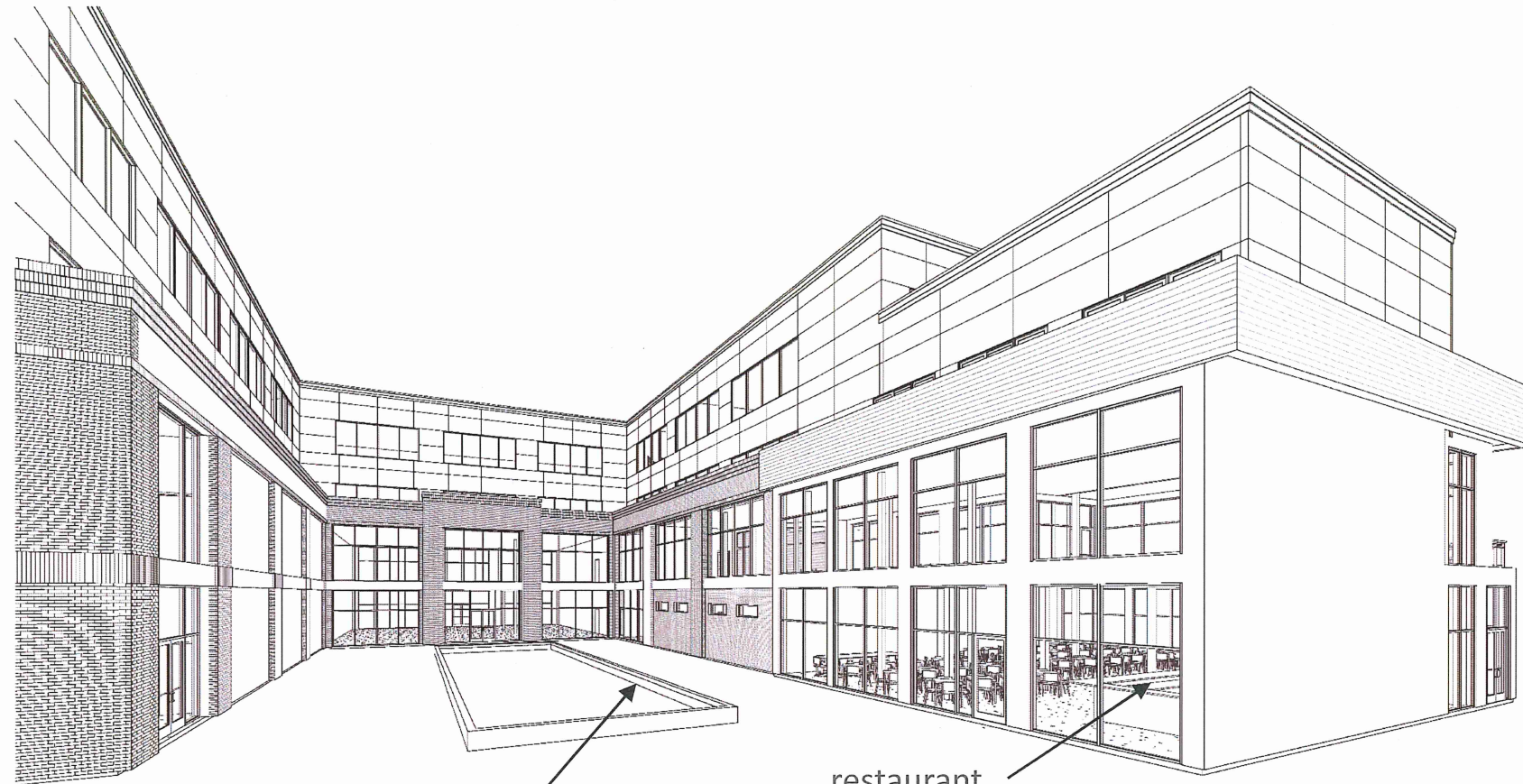
Greer
City of Greer, SC



<https://ktgy.com/ktgy-unveils-designs-for-downtown-superiors-main-street-mixed-use-portion/>



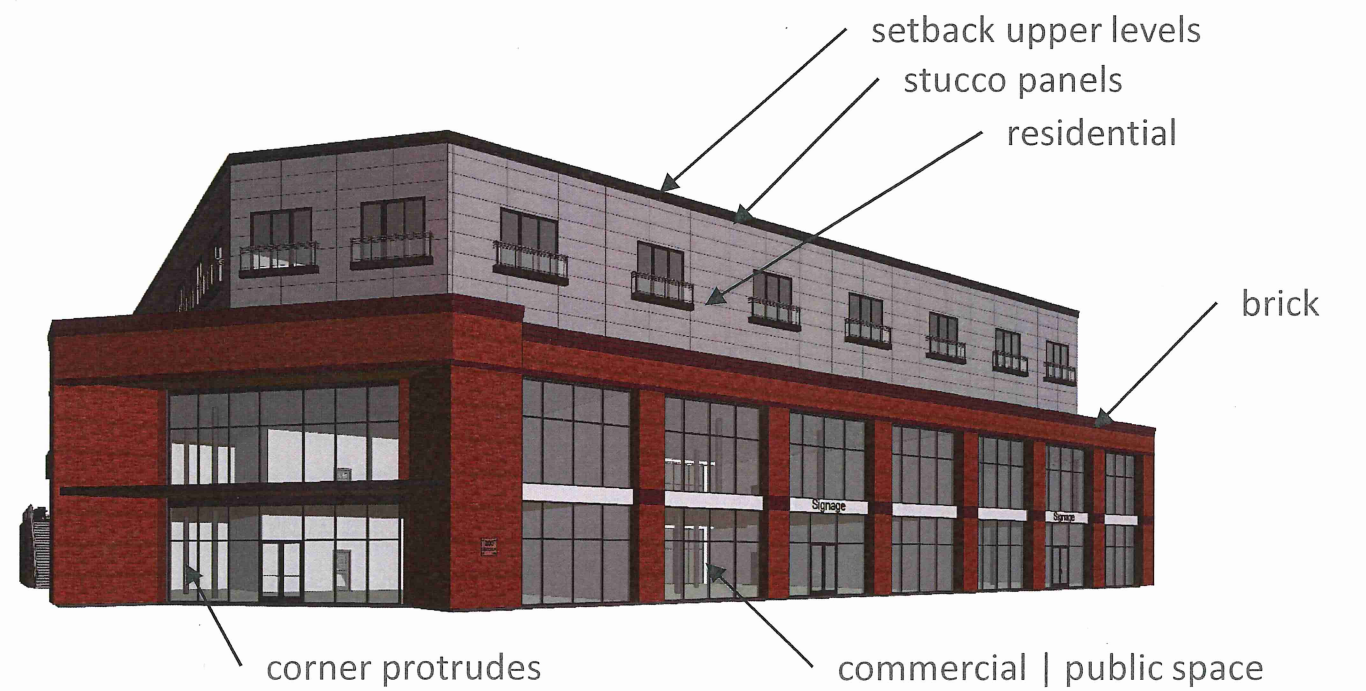
view from east poinsett + depot



water feature | public courtyard

restaurant

view from victoria + courtyard



setback upper levels

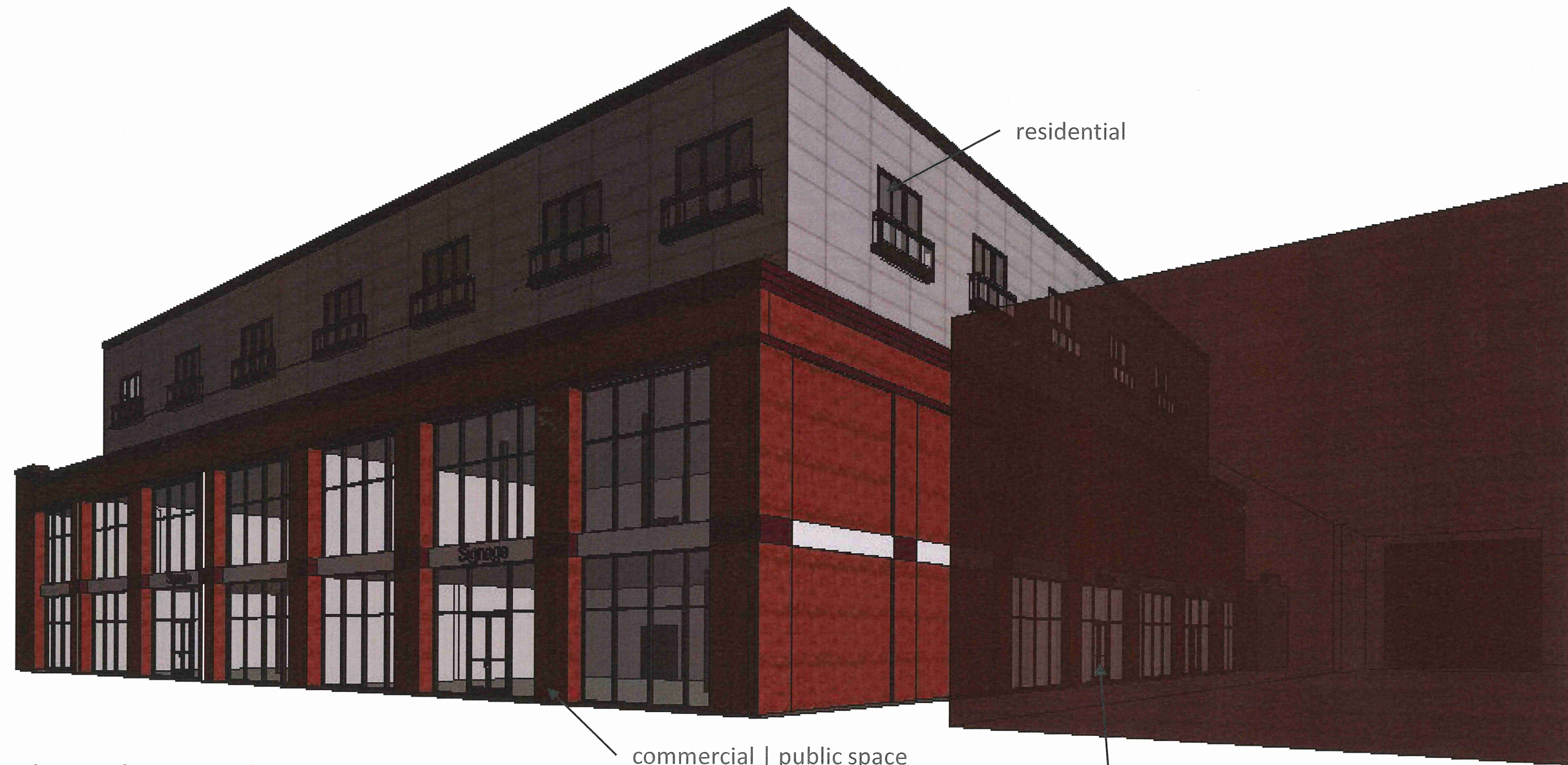
stucco panels

residential

brick

corner protrudes

commercial | public space

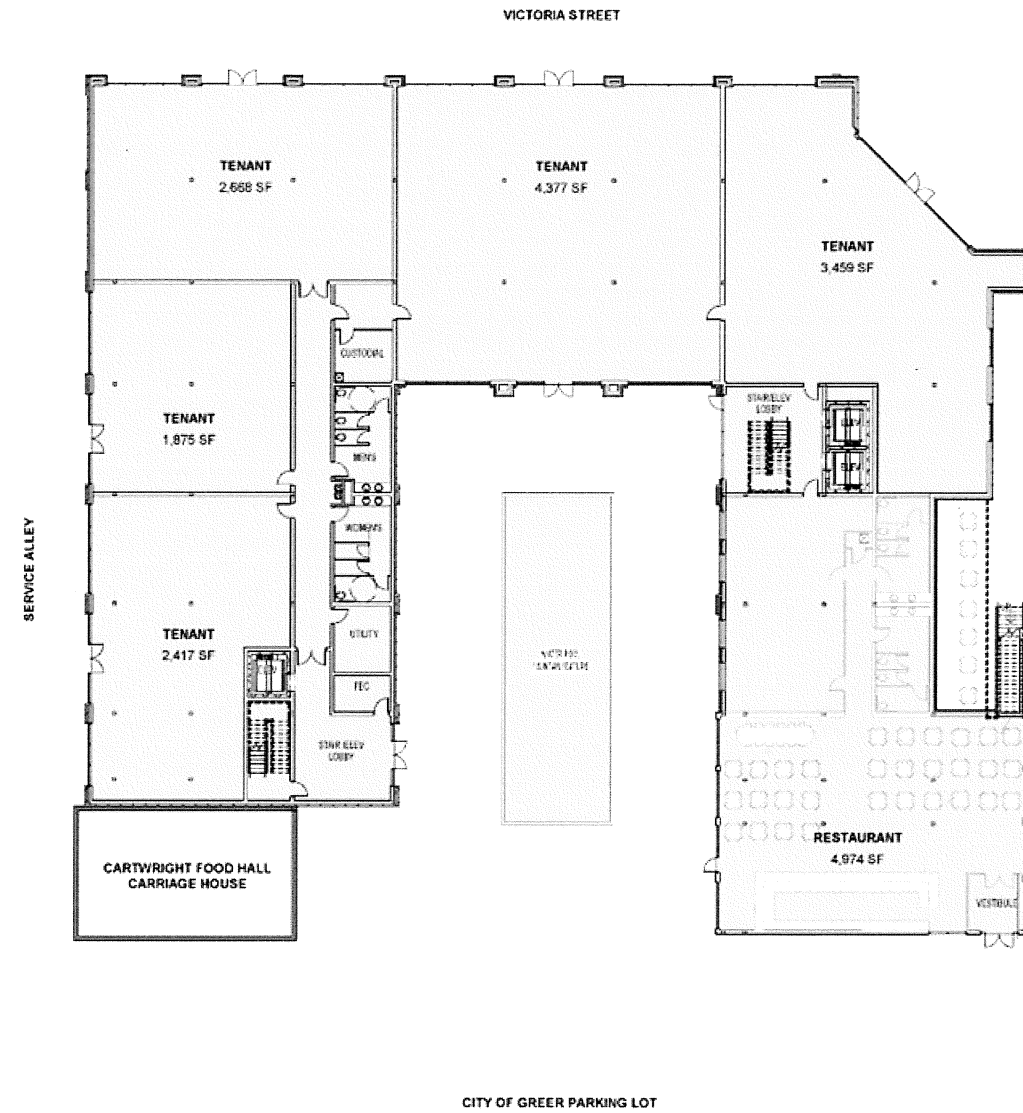


residential

commercial | public space

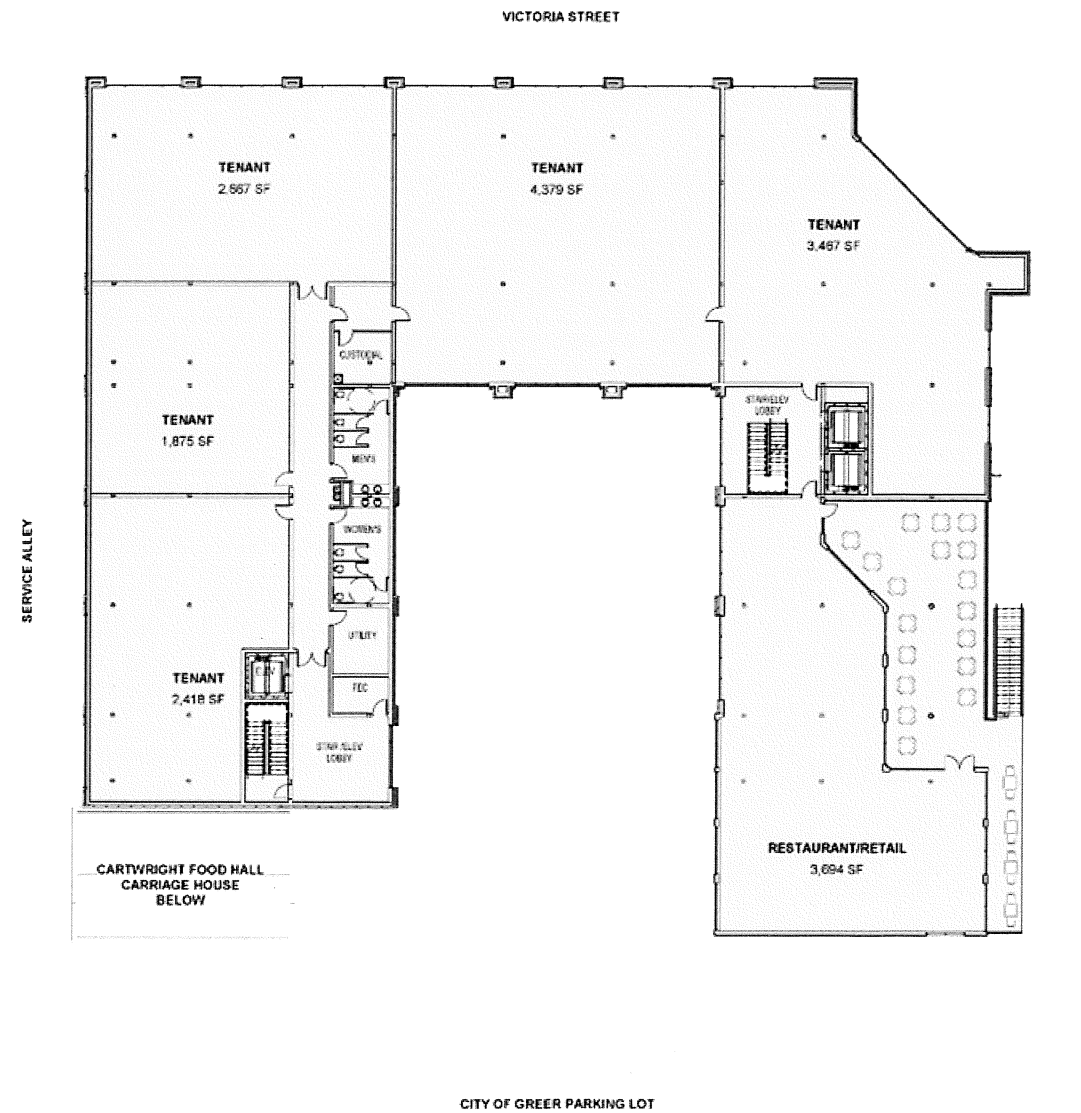
Retail | engage alley

view from victoria + alley



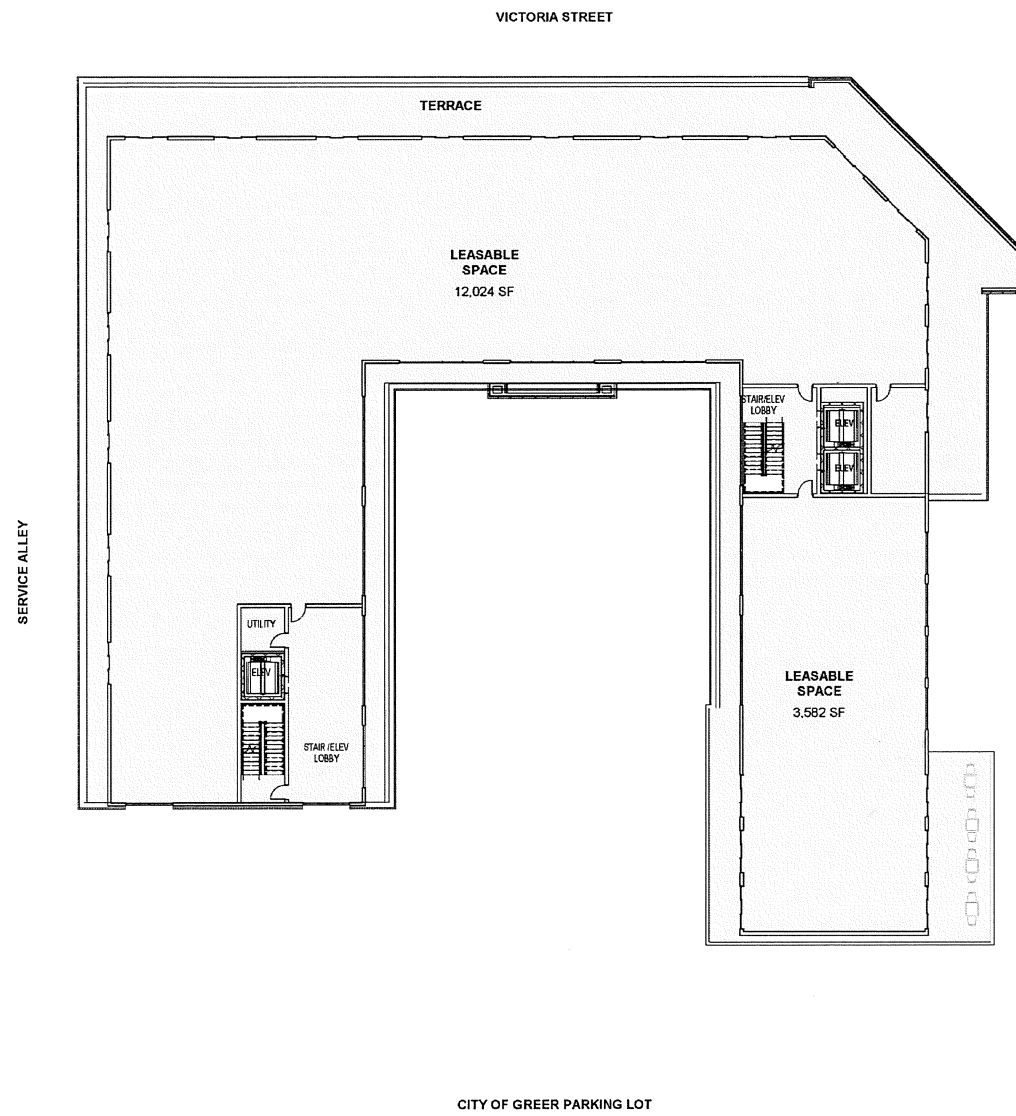
gross 23,986 sf
terrace n/a

level I – public/commercial/retail/restaurant



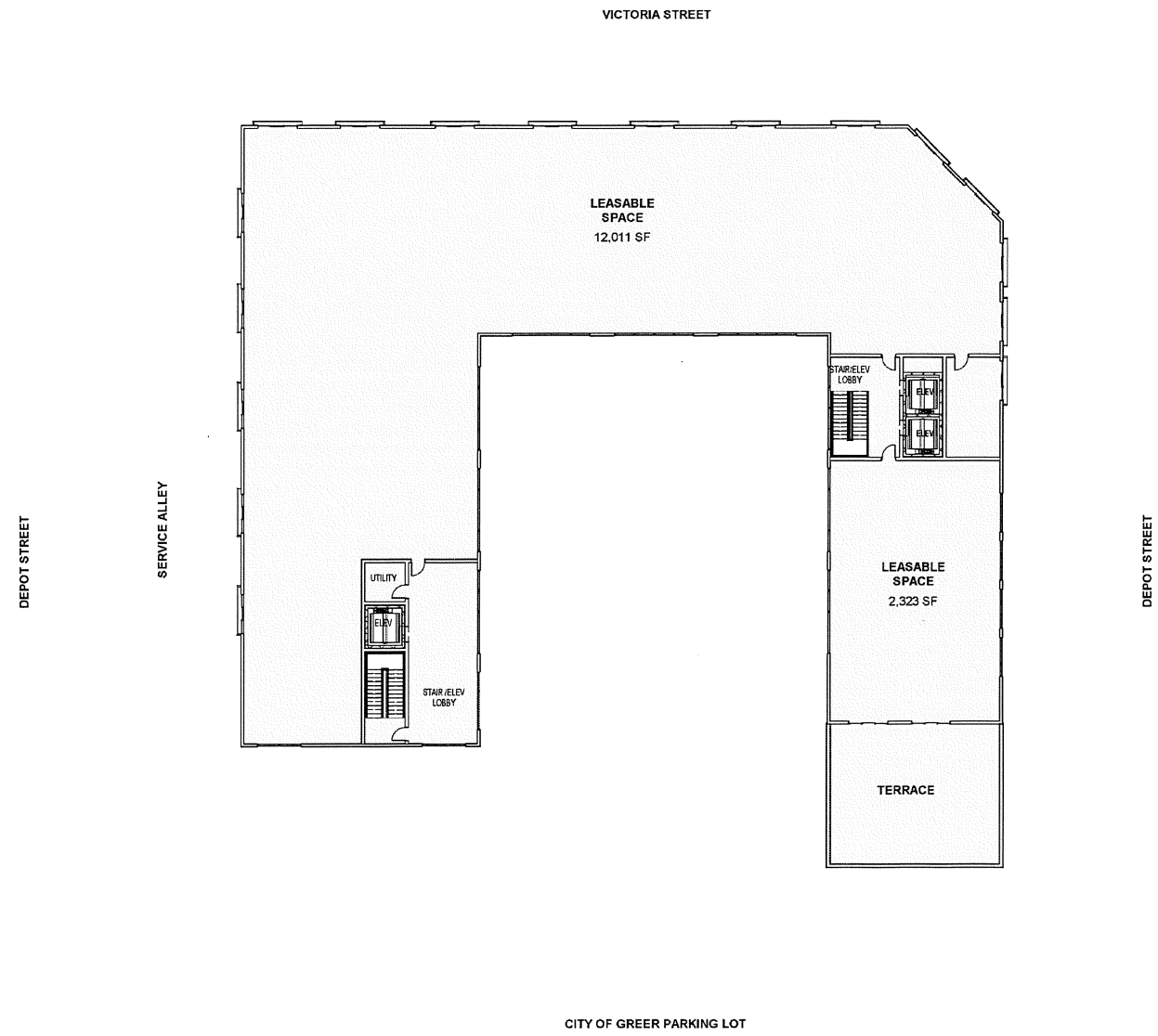
gross 22,704 sf
terrace 1,989 sf

level II – commercial office/retail



gross 18,151 sf
terrace 6,115 sf

level III – residential/commercial



gross 16,844 sf
terrace 1,232 sf

level IV – residential/commercial