

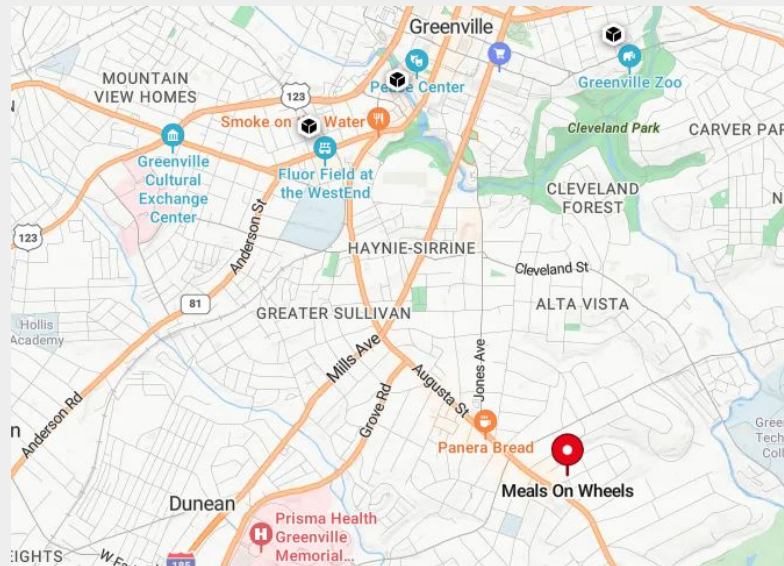
CALL FOR OFFERS | REDEVELOPMENT OPPORTUNITY



15 Oregon St

Offering Summary

Price	CALL FOR OFFERS - Due March 11, 2024
Acreage	+/- 1.91 AC
County	Greenville
Utilities	All to site
Tax Map #	0204000900800
Zoning	RH-C (City of Greenville)



Larry Webb | 864-238-6673 | Larry@kdsproperties.com

Mark Ratchford, MAI | 864-430-0371 | mratchford@kdsproperties.com

Property Highlights

Rare infill residential opportunity
Located in the desirable Augusta Road area
Existing +/- 11,200 SF Office Building
Single Family Residential Redevelopment Land or Adaptive Reuse
All utilities available

Property History

This offering is for the current Meals on Wheels (MOW) of Greenville headquarters. This property has served the MOW Greenville community since 1968. MOW has purchased a new site and is currently developing a new state-of-the-art facility to have the ability to continue to serve the Greenville community. Relocation date estimated Summer 2025

Rare infill opportunity located in the established and desirable Augusta Road area of the city of Greenville. The 1.91+/- acre site is improved with an 11,200 SF office building. The property is ideally suited for adaptive reuse or redevelopment for single family/townhouse development.

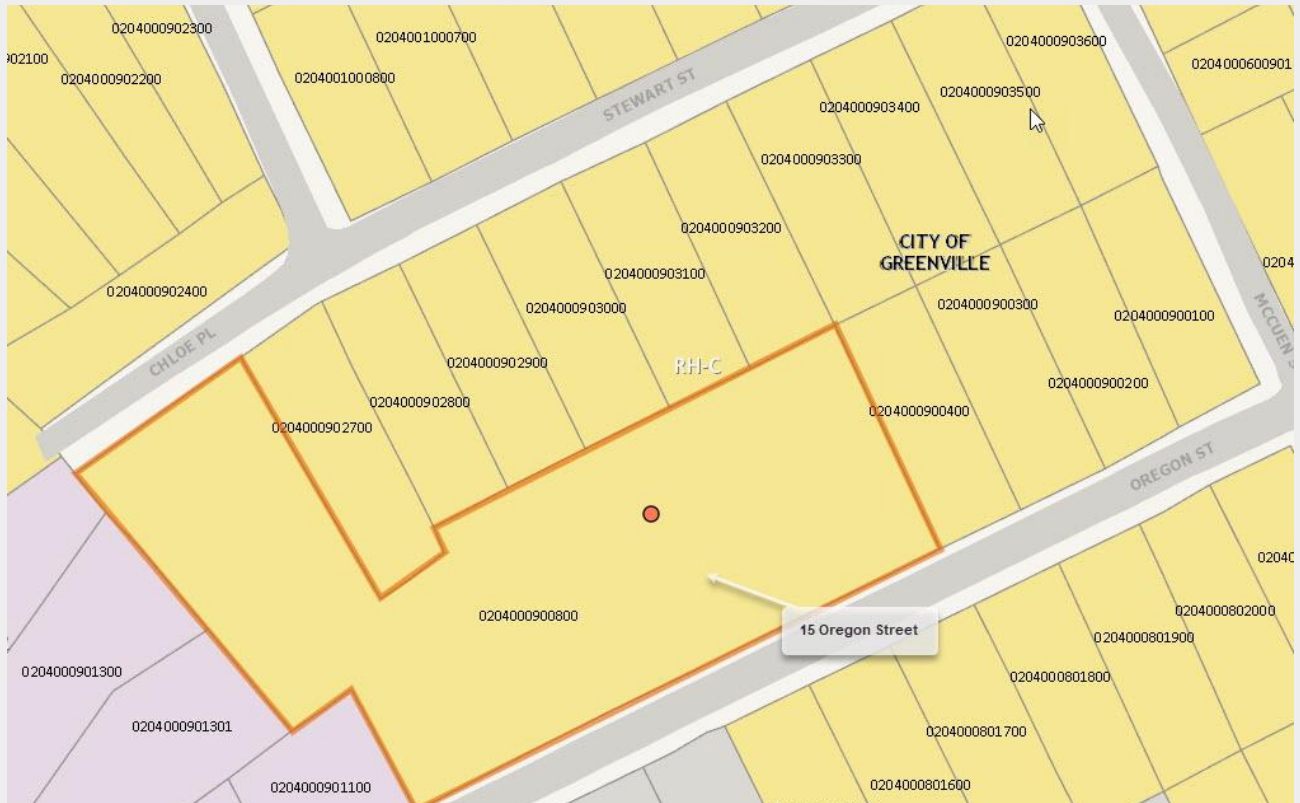
Offer Terms

Property will be sold via a Call for Offers process. All offers are due by 5PM on 3/11/2024. As part of the sale, the seller may require a negotiated transition period to allow for completion of their new headquarters building. Send all offers to mratchford@kdsproperties.com.



Larry Webb | 864-238-6673 | Larry@kdsproperties.com

Mark Ratchford, MAI | 864-430-0371 | mratchford@kdsproperties.com



Larry Webb | 864-238-6673 | Larry@kdsproperties.com

Mark Ratchford, MAI | 864-430-0371 | mratchford@kdsproperties.com



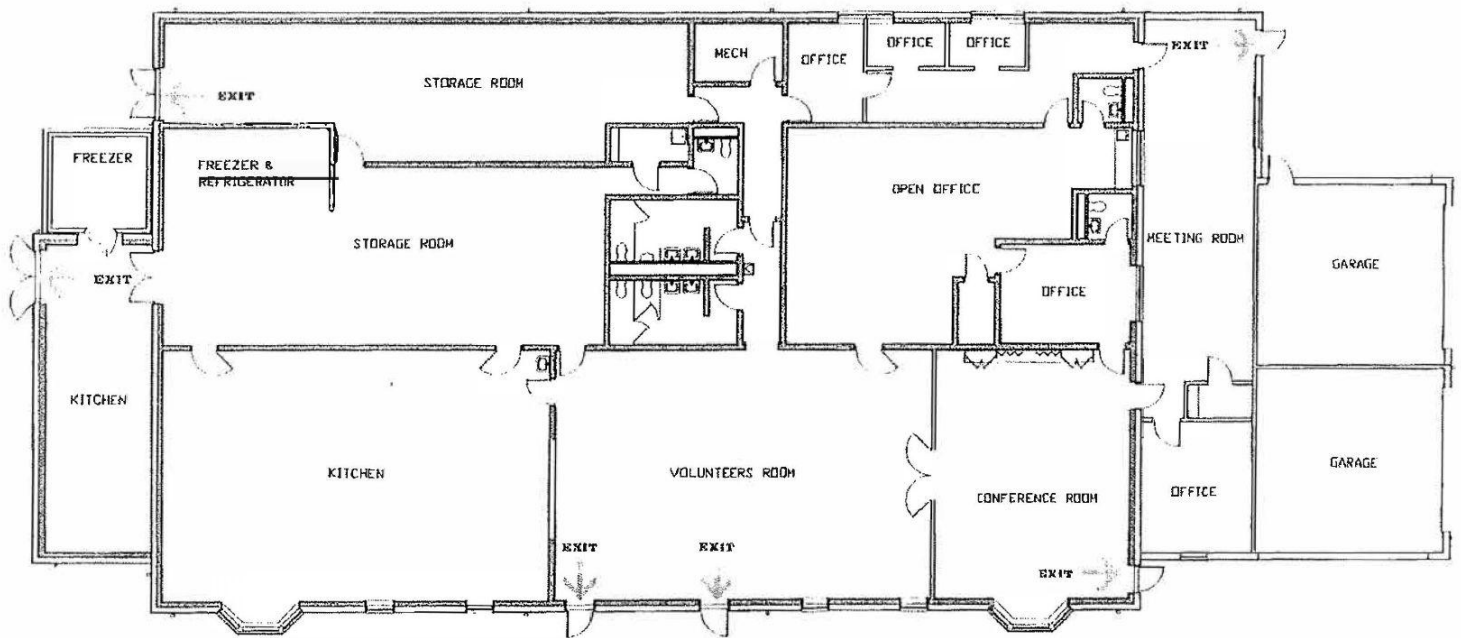
Larry Webb | 864-238-6673 | Larry@kdsproperties.com

Mark Ratchford, MAI | 864-430-0371 | mratchford@kdsproperties.com



Larry Webb | 864-238-6673 | Larry@kdsproperties.com

Mark Ratchford, MAI | 864-430-0371 | mratchford@kdsproperties.com



Larry Webb | 864-238-6673 | Larry@kdsproperties.com

Mark Ratchford, MAI | 864-430-0371 | mratchford@kdsproperties.com