

THIS DRAWING AS AN INSTRUMENT OF SERVICE SHALL NOT BE REPRODUCED, ALTERED OR COPIED IN WHOLE OR IN PART WITHOUT THE WRITTEN PERMISSION OF THE ARCHITECT. ARCHITECTURAL DRAWINGS ARE PROTECTED BY THE U.S. GOVERNMENT COPYRIGHT LEGISLATION. COPYRIGHT 2021, ADEPTUS ARCHITECTURE, INC. ALL RIGHTS RESERVED.

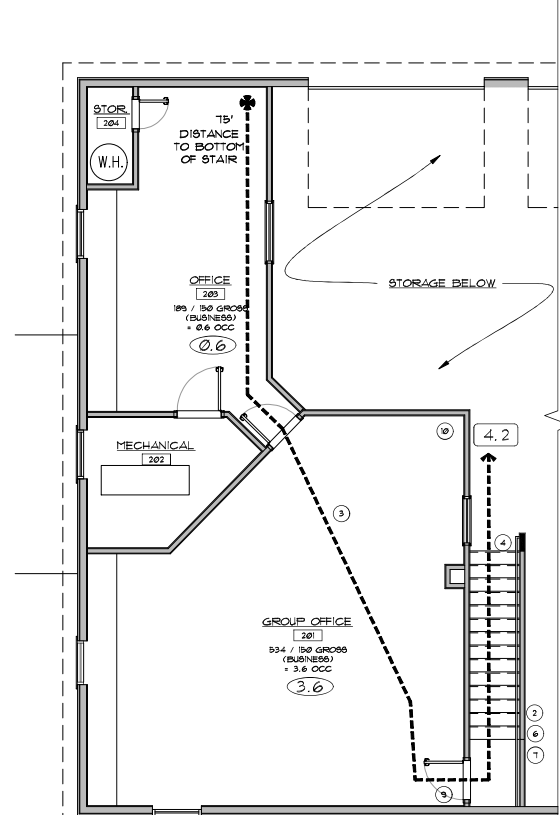
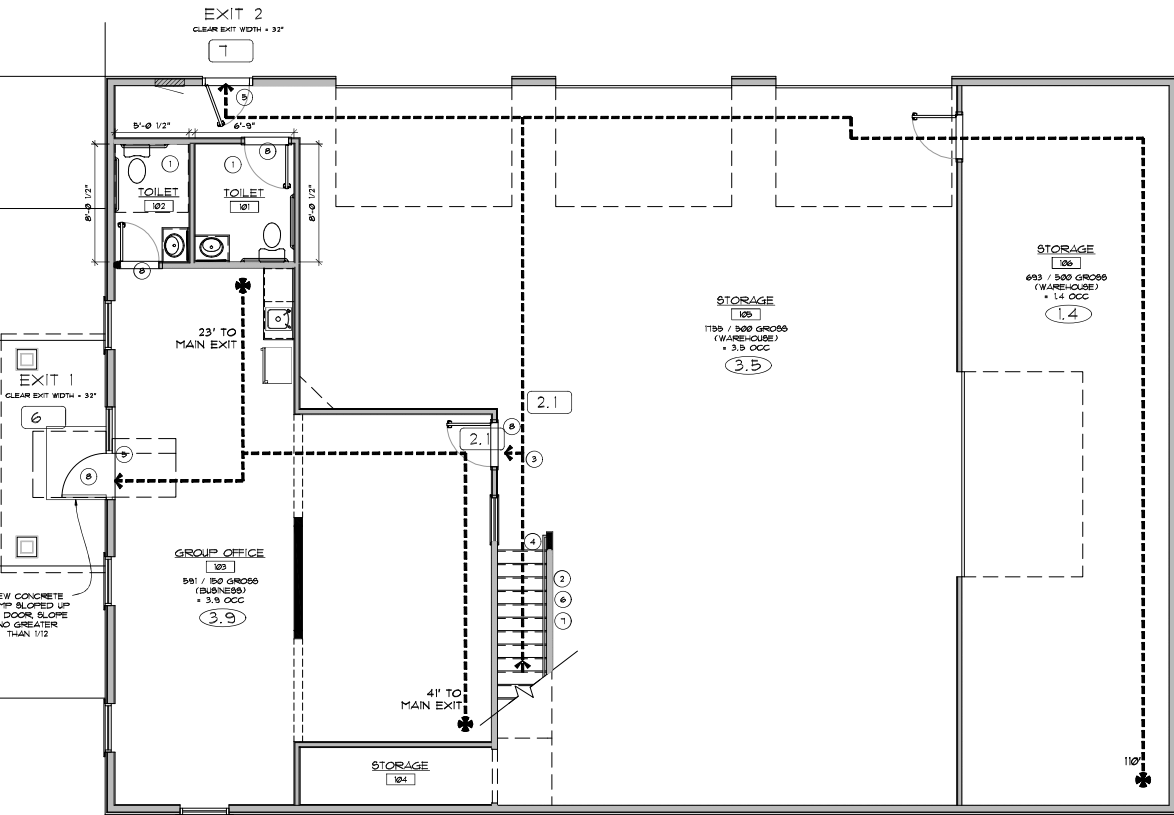
2018 INTERNATIONAL EXISTING BUILDING CODE, NOTES

WORK INVOLVED TO BE LEVEL 2, PER 2018 IEBC, 603.1

- 1 EXISTING OCCUPANT LOAD = 12.8 OCC, NEW OCCUPANT LOAD = 13 OCC, INCREASED OCCUPANT LOAD NOT MORE THAN 20%, THEREFORE NO ADDITIONAL BATHROOMS REQUIRED PER 2018 IEBC, 809.1
- 2 EXISTING GUARDS ON STAIRS MUST COMPLY WITH 2018 IEBC, 805.5.
- 3 EXIT FROM THE SECOND STORY, IS NOT GREATER THAN 39 AND THE EXIT ACCESS TRAVEL DISTANCE DOES NOT EXCEED 75 FEET, BEFORE HAVING TWO MEANS OF EGRESS, 2018 IEBC, TABLE 805.3.1.1 (2)
- 4 STAIRWAYS SHALL NOT BE LESS THAN 22 INCHES WIDE WITH RISERS NOT MORE THAN, AND TREADS NOT LESS THAN, 8 INCHES, 2018 IEBC, 805.3.1.2.3
- 5 TWO EGRESS DOORS FROM 1ST STORY SPACE REQUIRED BECAUSE THE TRAVEL DISTANCE TO AN EXIT EXCEEDS 75 FEET, 2018 IEBC, 805.4.1.1
- 6 HANDRAILS REQUIRED ON EXIT STAIRWAY THAT IS PART OF MEANS OF EGRESS, PROVIDED THE FULL LENGTH OF THE STAIRWAY, 2018 IEBC, 805.5.1
- 7 GUARDS SHALL BE PROVIDED ON STAIRWAYS MORE THAN 30 INCHES ABOVE FLOOR, 2018 IEBC, 805.1.1
- 8 ACCESSIBILITY REQUIREMENTS FOR EXISTING BUILDINGS SHALL COMPLY WITH THE 2009 EDITION OF ICC A117.1, 2018 IEBC, 307.9
- 9 DOOR SWING NOT REQUIRED TO BE IN THE DIRECTION OF TRAVEL, WITH OCCUPANT LOAD OF LESS THAN 50 SERVED BY SPACE, 2018 IEBC 1010.1.2.1
- 10 MEZZANINE NOT REQUIRED TO BE OPEN TO BELOW, PER 2018 IEBC 505.2.3

LIFE SAFETY PLAN LEGEND

- 10 OCCUPANCY
- +--- TRAVEL DISTANCE
- 100 OCCUPANT LOAD AT EXIT
- ☒ FIRE EXTINGUISHER W/ CABINET
- ☒ FIRE EXTINGUISHER



FIRST FLOOR LIFE SAFETY PLAN
SCALE: 1/4" = 1'-0"

MEZZANINE FLOOR LIFE SAFETY PLAN
SCALE: 1/4" = 1'-0"



ADEPTUS ARCHITECTURE, INC. 121 MAIN STREET GREENVILLE, SC 29601 864-242-2914

**RENOVATIONS TO THE
TITAN SOLAR FACILITY**

PIEDMONT, SOUTH CAROLINA
3150 RIVER ROAD

DRAWN BY: JPH
CHECKED: WBA
DATE: 09-28-21
SCALE: AS NOTED
JOB NUMBER: 2119
REVISIONS:

TAX MAP # 2370005028
DESCRIPTION
LIFE SAFETY PLAN

SHEET

A0.21
SUBMIT FOR PERMIT